

New River Valley Comprehensive Economic Development Strategy 2014



New River Valley
Planning District Commission

Table of Contents

Chapter 1: NEW RIVER VALLEY OVERVIEW	3
Chapter 2: PRIORITIES, GOALS, AND OBJECTIVES.....	17
Chapter 3: PROJECT EVALUATION FOR 2013 – 2014.....	22
Chapter 4: NEW ANNUAL PROJECT PACKAGE REPORT	32
Chapter 5: IMPLEMENTATION AND RESILIENCY.....	55
Appendix	57

List of Figures and Tables

Figure 1: New River Valley Projected Population Growth	4
Figure 2: Median Household and Per Capita Income by Locality.....	5
Figure 3: NRV Population by Age	5
Table 1: NRV Employment by Sector.....	6
Table 2: NRV Cluster Analysis	7
Table 3: Virginia Southwestern Mountain Climate Region	9
Table 4: New Business Startups	15
Table 5: Per Capita Income	36
Table 6: Unemployment Rate	36
Table 7: Fiscal Stress Scores by Locality	36

Chapter 1: NEW RIVER VALLEY OVERVIEW

1.1 INTRODUCTION

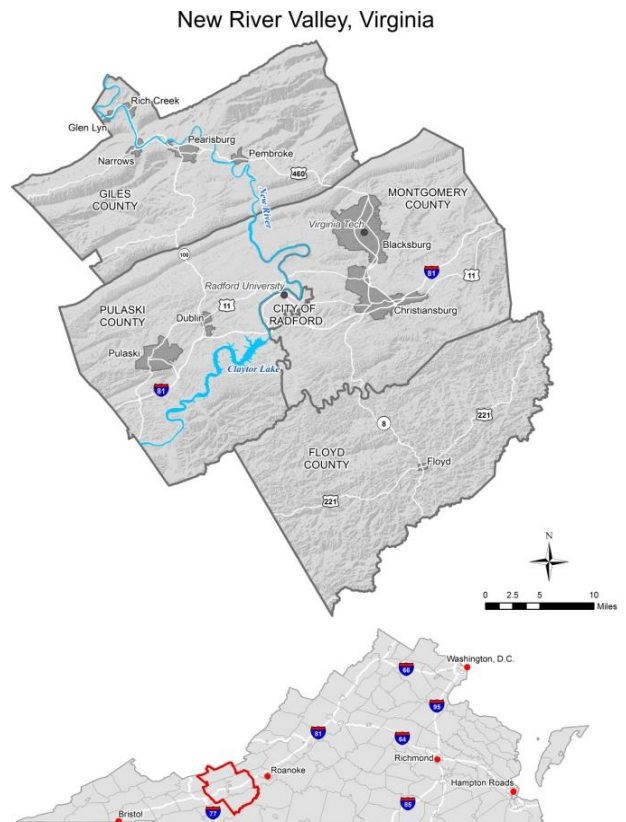
The New River Valley is located in southwest Virginia and is comprised of four counties (Floyd, Giles, Montgomery, Pulaski) and the City of Radford. There are ten towns within the four counties and a total regional population of 178,350 based on the 2010 census. The region is bisected by major transportation routes Interstate 81 and US Route 460. Major employers include Virginia Tech, Radford University, Volvo Trucks North America, and Celanese.

The region has grown from a manufacturing and agrarian focused economy, and is currently going through the transition to an economy that is more balanced, showing gains in sectors such as information technology, healthcare and biomedical, business and financial services, energy, and agricultural businesses. This transition has created the need for training in these growing sectors. Career pathway development is an important part of this transition to a more modernized economy.

Through the New River Valley Livability Initiative, a three year regional planning effort, four themes were developed in an effort to determine what was valued by New River Valley residents. These themes are:

1. Enhancing Living and Working Environments
2. Preserving Rural Heritage and Community Character
3. Making the Business Environment Productive and Resilient
4. Building Healthy Communities

Each of these themes has a direct effect on economic development, and these themes are incorporated into the 5-Year update of the New River Valley's Comprehensive Economic Development Strategy. The region has seen success domestically and internationally in bringing in new businesses. These successes are celebrated, but the need to create homegrown startups needs to improve to strengthen the resiliency of the regional economy. The CEDS serves as a vision on how to reach the potential for the regional economy, bolstering the success of businesses within the New River Valley while improving the prosperity of its people.

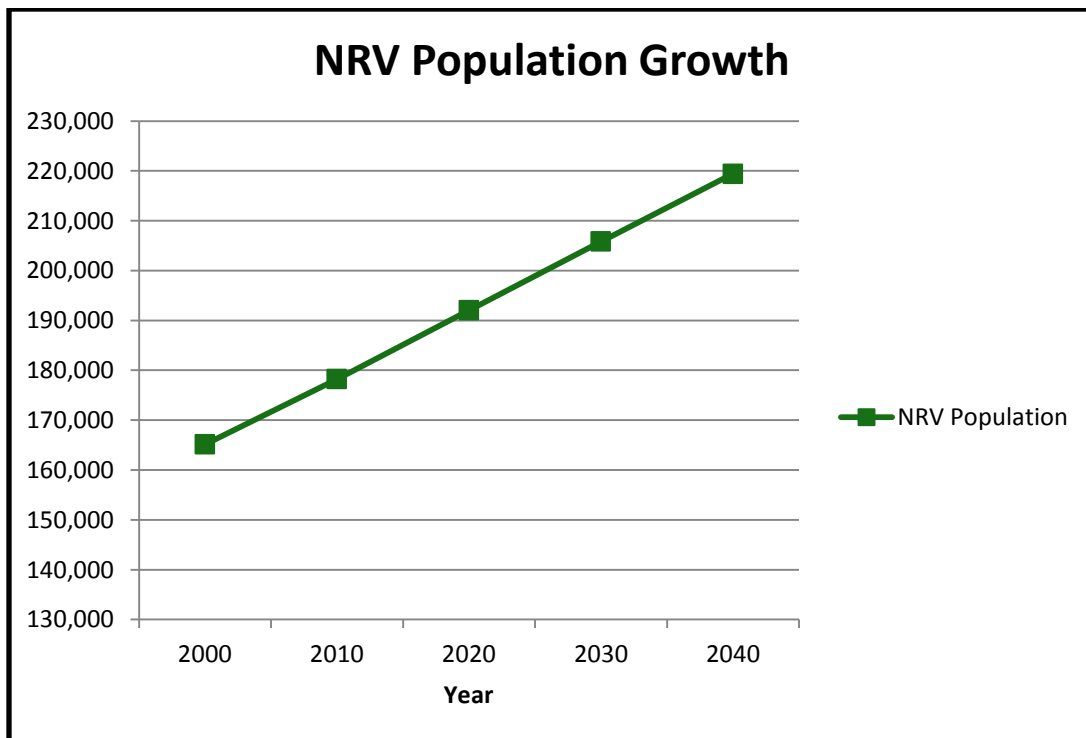


1.2 DEMOGRAPHIC PROFILE

Population

The New River Valley currently has a population of 178,350 and population projections show continued, steady growth to a 2040 population of 219,420, a 23% increase over a 30 year period. The City of Radford and Montgomery County have high percentages of student populations from Radford University and Virginia Tech, with a total student population of the two universities reaching nearly 40,000. This produces nearly 10,000 new graduates within the region each year.

Figure 1: New River Valley Projected Population Growth

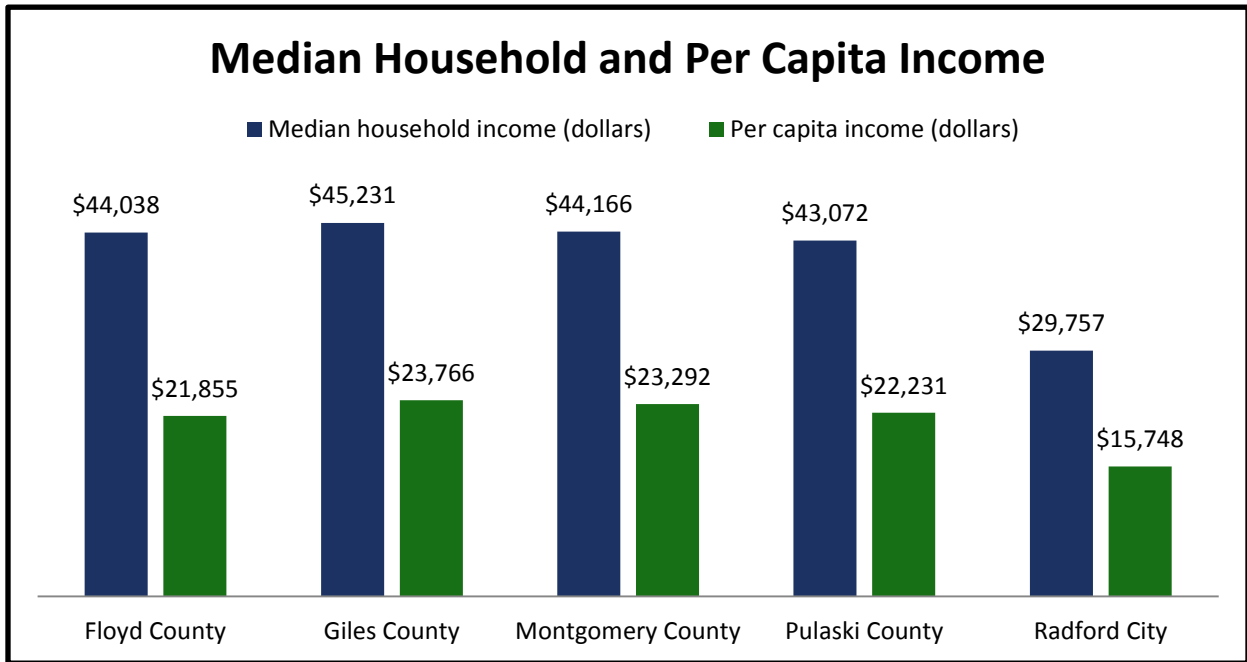


Virginia Employment Commission, U.S. Census Bureau

Income

Income levels within the New River Valley vary by county and city. New River Valley incomes fall short of the Virginia average, but have shown gains in recent years. Following is a chart outlining the median household and per capita incomes of NRV localities.

Figure 2: Median Household and Per Capita Income by Locality

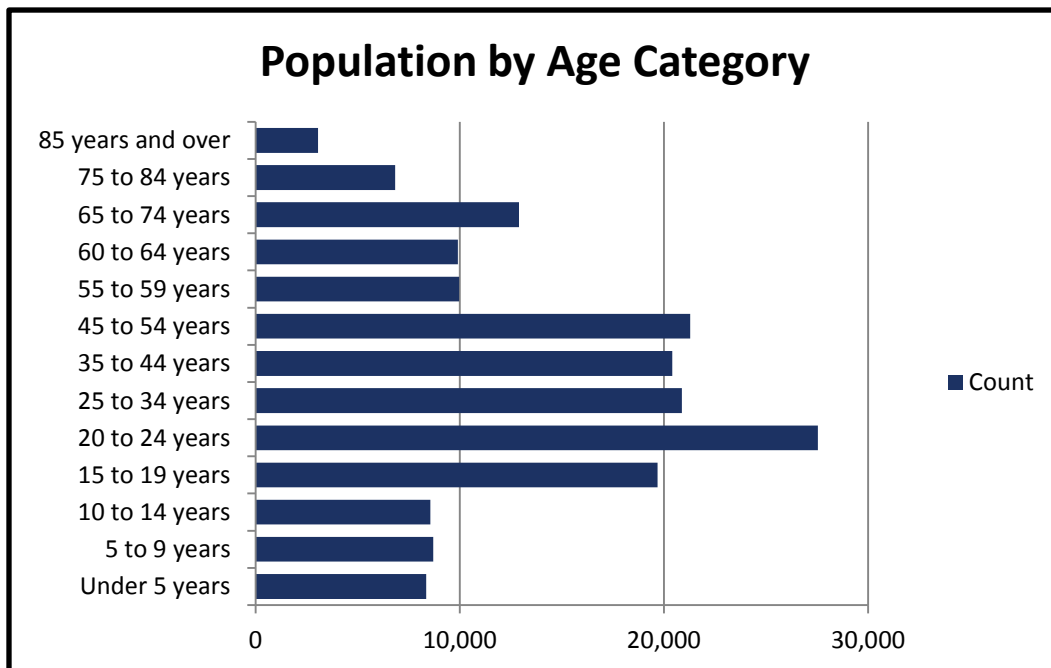


American Community Survey 5-Year Data, 2008-2012

Age

The median age within the New River Valley is 44.2. The two largest categories are 20-24 and 45-54 years old. The 20-24 year old population is heavily influenced by the college student population. Following is a breakdown of age groups within the region.

Figure 3: NRV Population by Age



American Community Survey 5-Year Data, 2008-2012

1.3 EMPLOYMENT

The total labor force according to 2012 American Community Survey data is 81,334. Following is a table detailing the employment by sector of these employees.

Table 1: NRV Employment by Sector

INDUSTRY SECTOR	2012 Jobs	2022 Jobs Projected	Difference	2022 NRV Job Growth/Loss
Business & Financial	7,237	9,671	2,434	33.60%
Healthcare	4,663	5,990	1,327	28.50%
Energy	5,297	5,843	546	10.30%
IT Telecomm and Software	4,168	4,598	430	10.30%
Biomedical – R&D	696	840	144	20.60%
Agribusiness	720	692	-28	-3.90%
Arts, Entertainment, Recreation	2,561	3,151	590	23.00%
Electrical Equipment Manufacturing	2,281	2,108	-173	-7.60%
Defense	2,086	2,278	192	9.20%
Advanced Materials	3,977	3,351	-626	-15.70%
Transportation Equipment Mfg.	2,747	1,762	-985	-35.90%

Southern Rural Development Center, NRV Cluster Analysis 2012

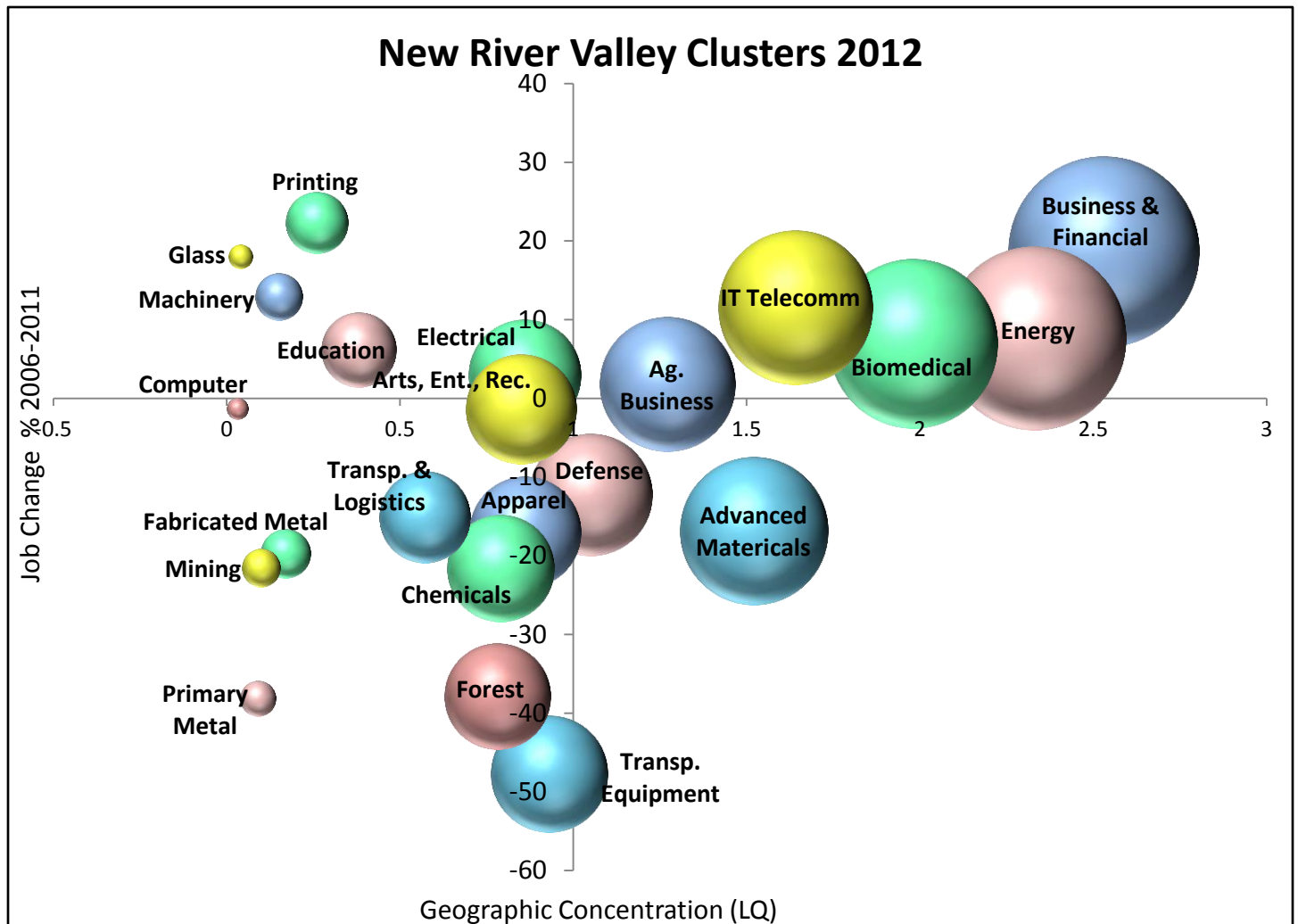
**Retail and university/college employment not reflected in chart.*

The New River/Mount Rogers Workforce Investment Board partnered with the Virginia Tech Office of Economic Development to develop a Skills-Gap Analysis for the region. Both soft skill and technical skill gaps were evaluated. For the region, soft skill needs include: good attendance, critical and analytical thinking, communication, and problem solving. Technical skill needs include: electrical/electronics, engineering, general maintenance, welding, and customer service and sales.

CLUSTER ANALYSIS

The New River Valley Planning District Commission worked with the Southern Rural Development Center (SRDC) at Mississippi State University to complete a cluster analysis of the New River Valley. According to the Economic Development Administration, economic clusters are geographic concentrations of interconnected industries and supportive organizations that make regions uniquely competitive for jobs and private investment. To perform the analysis, the SRDC researched employment concentrations within economic sectors throughout the region while measuring the job growth or loss within the specified cluster. As part of this analysis, pre- and post-recession time periods were evaluated to demonstrate the strengths and weaknesses of clusters within the region. Following is a chart that shows economic sectors divided into quadrants. Those in the top right quadrant are considered to be the strongest in the region with strong job growth and a geographic concentration in that sector. The cluster chart shows five economic sectors that are growing in specialization and employment.

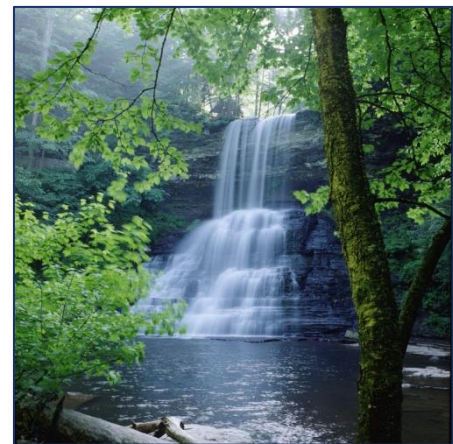
Table 2: NRV Cluster Analysis



These clusters are: 1) Business and Financial Services; 2) Energy; 3) Biomedical; 4) Information Technology and Telecommunications; and 5) Agribusiness. In cluster theory, the top right quadrant, or 'stars', highlights the standout industries that define the region's economy that also have potential to keep growing in specialization and bring additional employment. The top left quadrant shows 'emerging' clusters that lack geographic concentration, but can grow into the 'star' category due to high job growth. These 'emerging' clusters need strategies focused on developing the workforce and entrepreneurial assistance. The bottom right quadrant shows sectors that still have geographic concentration but are losing that concentration due to job losses. These sectors need special attention if there is to be potential for long-term success in that sector. Finally, the lower left quadrant shows economic sectors that do not have geographic concentration and have lost jobs. Generally speaking, these sectors lack competitiveness unless new industries can be attracted to the region and bolster that sector. This analysis serves as a guide for future strategy development with regards to workforce training, entrepreneurial development and resource allocation. Further, it provides a base for discussion and development of future strategies.

1.4 ENVIRONMENT AND NATURAL RESOURCES

The natural assets contained within the New River Valley are an important part of the region's character as well as the ability to generate tourism, a growing sector for southwest Virginia. The New River is an important natural feature and generates the name for the region. Mountains are an equally important natural feature for the region.



Cascade Falls, Credit: Virginia Tech

The New River Valley falls within three distinct physiographic provinces: the Blue Ridge

Province (Floyd County), the Valley and Ridge Province (Pulaski County, Montgomery County, most of Giles County, and the City of Radford), and the Appalachian Plateau (in a small part of Giles County). Each province has very different geological characteristics. Giles, Pulaski, and Montgomery Counties are mainly located in the Valley and Ridge Province which is characterized by sedimentary rocks such as limestone, shale, sandstone and dolomites (i.e., karst). Historically, limestone has been mined for agriculture use and sandstone for building purposes. Floyd County is located in the Blue Ridge Province, which is characterized by metamorphic rocks such as gneiss and schist. Metamorphic rocks are generally harder rocks and have been mined for use in road construction (New River Valley Hazard Mitigation Plan, 2011).

All counties in the New River Valley are quite similar with regards to type of land class. The majority of land within the region is considered timberland. It covers 68% of all land within the New River Valley. The only county in the region with a different forestry profile would be Giles where 76% of the total area is considered forest land, a significant amount of which is in the Jefferson National Forest (New River Valley Hazard Mitigation Plan, 2011).

The average elevation of the NRV is about 2,500 feet. Elevations range from 1,470 feet above mean sea level at Glen Lyn to 4,348 feet at Bald Knob on Salt Pond Mountain in Giles County. Mountain Lake, also located on Salt Pond Mountain, is one of two natural lakes in Virginia and is reportedly the highest natural lake east of the Rocky Mountains. The New River runs through the Counties of Pulaski, Montgomery, and Giles, and the City of Radford, thus giving the region its name. Little River, Peak Creek, Big Walker Creek, and Dodd’s Creek are a few of the tributaries of the New River. A small portion of eastern Montgomery and Floyd Counties are in the Roanoke River basin, while a small portion of Giles County and the Craig Creek watershed in Montgomery County drain into the James River (New River Valley Hazard Mitigation Plan, 2011).

Typical fall foliage peak color is October 10-20 in the Southwestern Mountain Climate Region. Following is a chart from the Virginia Tourism Corporation detailing the climate of the region.

Table 3: Virginia Southwestern Mountain Climate Region

	January Average	July Average	Annual Average
Temperature	24-44 (F)	60-85 (F)	
Precipitation	4.04 inches	4.73 inches	47.33 inches

Virginia Tourism Corporation, Southeast Regional Climate Center

Appalachian Trail

50 miles of the Appalachian Trail span Giles County and connects to nearly 2,200 miles of the trail extending from Georgia to Maine.

Blue Ridge Parkway

The Blue Ridge Parkway, spanning 469 miles total, travels through eastern and southern Floyd County. The Blue Ridge Parkway is famous for its scenic drives and brings tourists to the region.



Blue Ridge Parkway, Credit: Lydeana Martin

National Forest

Jefferson National Forest:

The Jefferson National Forest traverses the New River Valley and is home to Pandapas Pond, featuring a trail network for recreation users.

State Parks

Claytor Lake State Park:

The New River Valley is home to Claytor Lake State Park, the only state park in the region. Claytor Lake. Claytor Lake has a full service marina and provides options for fishing, swimming, and camping.



Claytor Lake Dam, Credit: Peter Huber

New River Trail State Park:

The New River Trail stretches 57 miles along an abandoned railroad corridor.

Other Natural Features

- Buffalo Mountain Natural Area Preserve
- Mountain Lake
- War Spur and Wind Rock Trails
- Radford Riverway
- Dora Trail
- Gatewood Park Campground and Reservoir
- Bottom Creek Gorge
- Falls Ridge Preserve
- Huckleberry Trail
- Rock Castle Gorge National Recreation Trail
- Cascades Recreation Area



Huckleberry Trail

1.5 INFRASTRUCTURE

The following information on infrastructure was gathered as part of the New River Valley Livability Initiative and can be found in the 2013 report entitled, *Livability in the New River Valley: From Vision to Action*.

CELL PHONE SERVICE PROVIDERS CURRENTLY AVAILABLE

- nTelos
- Sprint/Centel-Virginia
- U.S. Cellular
- Verizon- Virginia
- AT&T
- Citizens Telephone Cooperative
- Verizon South
- Pembroke Telephone Cooperative

Virginia Economic Development Partnership: NRV Community Profile.

- The region now has broadband access along major regional corridors, around universities, and within larger jurisdictions.
- Some rural areas with sparse populations and mountainous topography still have limited access and low-speed/bandwidth which limits opportunities for full engagement in the information economy.

ROADS

- I-81 and US 460 are critical corridors for truck freight movement within the region and throughout the Commonwealth. 40-60% of truck traffic traveling along I-81 neither has an origin or destination in Virginia (9,000 – 13,400 trucks each day).
- Employers and major employment centers are served through road infrastructure mainly through interstate or state route access. Large employers not located along major roads or in more urbanized areas have selected locations based on proximity to natural resources or other valued amenities.

WATER AND SEWER

- New River Valley towns and the City of Radford are served by public water and sewer. Wells and septic systems serve the needs of residents who are not currently on public water and sewer.
- Floyd has limited ground water resources which also limits water intensive economic opportunities.

GAS

- Natural gas is supplied by ATMOS Energy in more populated areas of Radford, Blacksburg, Christiansburg, Dublin, Pulaski, and Fairlawn. Roanoke Gas services eastern Montgomery County. No gas service is provided in Floyd County. Unlike electricity, industrial, institutional and other large users dominate use with about 65% of natural gas consumption in the region. Natural gas prices have declined since 2008 due to a 20% increase in domestic production.
- Columbia Gas of Virginia has provided service to Giles County since the 1960s. Columbia Gas is headquartered in Chesterfield, Virginia and is the third-largest gas utility in the Commonwealth of Virginia. **Columbia Gas of Virginia Company Profile*

CLEAN ENERGY

- Development of clean energy options in the region may play a role in attracting new businesses to the region. For example The Sierra Nevada Brewery was considering Christiansburg as a potential site but settled on Asheville, North Carolina, in part because North Carolina's "focus on green technologies played a role in luring the business to invest \$107.5 million into its new brewery there." **Mountain Express, 2013.*

RAIL

- Norfolk Southern's Heartland and Crescent Corridors intersect just East of Radford. Both corridors are of national significance for freight movement.
- Freight rail serves Pulaski, Giles, and Montgomery Counties as well as the City of Radford. Rail is a major asset to manufacturing and other industries within the region. Floyd County is not currently serviced by rail. Currently, no passenger rail services exist within the New River Valley.

INTERMODAL TRANSPORT

- Intermodal freight transport involves the transportation of freight using multiple modes of transportation (rail, ship and truck) without any handling of the freight itself when changing modes. This method reduces cargo handling, improves security, reduces damage and allows freight to be transported faster also reducing costs and total emissions.
- There is an intermodal transfer facility currently being proposed in Elliston as a part of the Heartland Corridor improvement plan. The completion of the facility would have effects on both the rail and roadway network within the NRV and surrounding regions. Truck freight primarily utilizes I-81, US 460, US 11, US 221, VA 100, VA 8, VA 42 and VA 61. I-81 is one of the primary truck freight corridors on the eastern seaboard.

AIRPORTS

- There are two general aviation facilities located in the New River Valley: the Virginia Tech-Montgomery Executive Airport in Blacksburg and the New River Valley Airport just north of Dublin in Pulaski County. The NRV Airport is currently a registered foreign trade zone and international port of entry. The nearest major commercial passenger airport is Roanoke Regional Airport approximately ten miles east of the region.

1.6 SWOT ANALYSIS

The New River Valley's CEDS Committee held, and continues to have discussions about the strengths, weaknesses, opportunities, and threats within the region. Each year, new items are identified for each category. In 2011, the CEDS Committee had an in-depth discussion, and the following show the results of that meeting alongside discussions from the previous three years.

Strengths

- Interstate-81 Transport Accessibility
- Middle mile broadband fiber network
- Water resources
- New River
- Clean air
- High quality of life
- Access to range of healthcare options
- Geographic proximity to large east coast population centers
- Available industrial space/land
- Low taxes
- Virginia Tech
- Radford University
- Access to local foods/agriculture
- Appalachian Trail and Mountains
- Elected officials
- Music, arts, and cultural resources
- Engaged community-based organizations
- Foreign Trade Zone
- Natural resources/beauty
- Recreation opportunities
- Blue Ridge Parkway
- Temperate climate
- Economic diversity
- Low utility costs
- New River Community College
- Virginia Tech Corporate Research Center
- NRV Economic Development Alliance
- Southwest Virginia tourism – i.e. Crooked Road

Weaknesses

- Communities still affected by offshoring leading to deteriorating downtowns
- Loss of historic buildings due to disrepair
- Downtown vibrancy
- Lack access to capital for start-ups
- Few entrepreneurial leaders
- Low population, lack critical mass
- Workforce skills not matching available jobs
- Low performing K-12 system
- Brain drain – losing young talent and families
- Lack of diverse energy sources
- Deteriorating housing in some communities
- Lack of racial/ethnic diversity
- Struggle to define regional identity
- Poverty
- Drug issues in some communities
- Marketing assets – tourism

Opportunities

- Public engagement
- K-12 partnerships with business leaders
- Entrepreneurship mentoring
- Define competitive advantages
- Job shadowing
- Apprenticeships
- Interregional collaboration
- Economic gardening
- Seed and venture funding

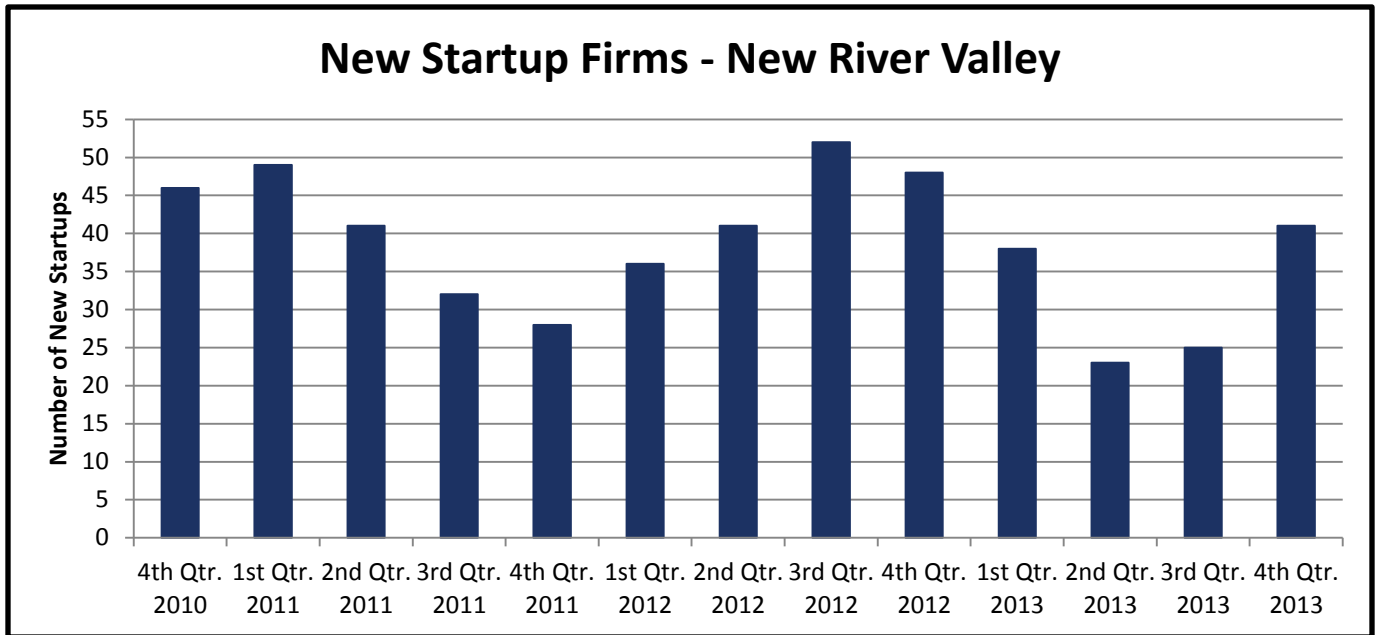
Threats

- Lack of influence at the state level
- Brain drain
- Rural/urban inequity or opportunity
- Current political climate – polarization
- Age of industrial building stock
- Age of residential building stock

1.7 ENTREPRENEURSHIP AND RESOURCES

Entrepreneurial development is important to the overall health of the economy as small business drives job growth. Following is a chart detailing new startups within the New River Valley over the past four years.

Table 4: New Business Startups



New River Valley startup companies have options in each locality for small business services. The urban areas within the Blacksburg-Christiansburg-Radford metro area are more robust, as is expected with a greater population density and two universities. Following is a list of regional, local, state, and interregional services available to small businesses within the New River Valley.

Regional

- Radford Small Business Development Center
- New River Valley Business Center
- VT KnowledgeWorks
- Roanoke-Blacksburg Technology Council
- 460 Angels
- Virginia Cooperative Extension
- Virginia Community Capital

Local

- Economic Development Authority of Floyd County
- Montgomery-Blacksburg-Christiansburg (MBC) Development Corporation Revolving Loan Fund
- TechPad
- Beans and Rice (Radford/Pulaski)

State

- Virginia Department of Business Assistance

Interregional

- Roanoke SCORE

A complete description of each small business service is included in the appendix.

1.8 PUBLIC PARTICIPATION

The following are public outreach activities during the development of the Comprehensive Economic Development Strategy alongside the New River Valley Livability Initiative.

- Kickoff Summit: 150 participants at Claytor Lake State Park.
- Working Groups: Economic development working group collaborated with the CEDS Committee to develop goals, objectives, and strategies.
- Community Priority Survey: 660 participants responded to develop regional priorities.
- NRV Tomorrow Survey: 750 participants responded to rank values, projects, and policies within the region.
- BUILT NRV Game: 249 participants discussed concerns, possibilities, and value within individual communities.
- New River Valley Planning District Commission Board of Directors: Hosts monthly public meetings where CEDS updates are reviewed. The final 2014 CEDS was presented on June 26, 2014.



BUILT NRV Game

Chapter 2: PRIORITIES, GOALS, AND OBJECTIVES

The New River Valley Planning District Commission (Economic Development District) leads the continuous planning process for economic development in Virginia's New River Valley. The Economic Development District works closely with localities and several regional groups that take key roles in pursuing economic development projects and funding to advance the quality of life in the New River Valley. Since the last 5-Year Update in 2009, the priorities of the region have changed; therefore, so have the goals and objectives. The seven priority areas have been identified by public outreach, the CEDS Committee, NRVPC Commissioners, and through research on best practices. The priority areas include: 1) Support Small Business and Entrepreneurial Development; 2) Preparation and Continued Support of Qualified Workforce; 3) Available Land, Quality Infrastructure, and Affordable Housing; 4) Attracting New Business to the Region; 5) Regional Marketing/Awareness to Promote the New River Valley; 6) Preserve Natural and Historic Areas; and, 7) Business Friendly Governance and Representation.

Priority 1: Support Small Business and Entrepreneurial Development

Goal: Establish an environment that fosters the growth of existing businesses and supports entrepreneurs from startup stage through maturation.

Objective 1: Optimize existing resources for entrepreneurs and small businesses and promote collaboration between these resources.

Objective 2: Increase the number of jobs created through entrepreneurial start-ups and expansions in the New River Valley.

Business Assistance and Entrepreneurial Support Key Strategies

- 1) Promote cooperation between the Radford Small Business Development Center, VT KnowledgeWorks, New River Community College, etc.
- 2) Create new and support existing financing opportunities for business/industry expansion, including venture capital.
- 3) Encourage the use of locally developed technology and intellectual property in manufacturing and other industries.
- 4) Organize creative financing programs and improve entrepreneurs' access to capital.



Virginia Tech Corporate Research Center

- 5) Increase small business support services through provision of community e-commerce space as well as trainings (social media, computer, etc.).
- 6) Link local industries with technology and research capabilities of Virginia Tech, Radford University, and New River Community College.

Priority 2: Preparation and Continued Support of Qualified Workforce

Goal: Prepare the New River Valley workforce for present and future employment in growing employment sectors.

Objective 1: Train and re-train workers for higher skills and productivity in the modern economy.

Objective 2: Improve the industry/education interface at all levels.

Preparation and Continuation of Qualified Workforce Key Strategies

- 1) Utilize the Community College or the One-stop Centers to assist businesses seeking trained employees or training of employees requiring enhanced skills.
- 2) To establish partnerships between industry/business and all levels of education by implementing an integrated workforce curriculum that provides students with more "real world" learning opportunities
- 3) Expand existing and explore new opportunities for business training and professional development programs.
- 4) Create a Youth Entrepreneurial Center for business and civic development and practice.
- 5) Integrate workforce education and training to meet the needs of the region's strongest economic clusters and where there are skills gaps.

Priority 3: Available Land, Quality Infrastructure, and Affordable Housing

Goal: Maintain existing and deploy additional infrastructure to meet the needs of businesses and residents.

Objective 1: Create an affordable, accessible and interlinked public transportation network that connects population centers with major employment centers.

Objective 2: Strengthen the economic position of downtown commercial districts.



Route 114 Bridge Completed 2014

Objective 3: Improve the region's telecommunication network to attract new firms, assist existing firms, and educate citizens.

Objective 4: Increase the energy efficiency of industrial and commercial buildings.

Quality Infrastructure Key Strategies

- 1) Coordinate and maximize the use of existing public and private transportation resources focused on employment mobility.
- 2) Seek diversification and mixed use redevelopment of downtown commercial districts.
- 3) Deploy last mile fiber optics using wired and wireless technologies throughout the region to serve businesses and residents.
- 4) Create utility standards for service providers to follow and coordinate public digging to minimize costs and disturbances.
- 5) Seek creative and cooperative regional financing strategies for major infrastructure needs.
- 6) Ensure adequate public utilities are in place for businesses and residents.
- 7) Coordinate and adopt creative approaches to encourage the creation of affordable housing for all age groups.
- 8) Use public schools, colleges and universities to expand education, training, and research around clean energy.
- 9) Encourage energy efficiency through education programs that detail cost, return on investment, and feasibility.

Priority 4: Attracting New Business to the Region

Goal: Attract new industries that will complement the region's economy, strengthen inter-industry linkages, and utilize the region's labor force.

Objective 1: Develop and strengthen the role of international trade and commerce in the economy of the New River Valley.

Objective 2: Increase the region's supply of ready and available industrial and other economic development properties.

Attracting New Business Key Strategies

- 1) Seek firms with an international focus to utilize the strategic assets of the New River Valley International Airport, Foreign Trade Zone and Commerce Park.

- 2) Recruit outside firms seeking a trained and skilled labor force, low utility costs, high quality industrial space, and convenient highway access.
- 3) Recruit outside firms that currently have significant supplier relationships with New River Valley companies.
- 4) Develop regional properties tailored to the needs of targeted industry sectors.

Priority 5: Regional Marketing/Awareness to Promote the New River Valley

Goal: Expand the regional identity and brand to increase the marketability of the region for businesses and tourists.

Objective 1: Improve the region's ability to market itself and respond to the needs of new industrial, research, and technological prospects.

Objective 2: Realize the region's tourism development potential and ability to market itself as a culturally and naturally unique tourism destination.



Explorenewrivervalley.com Regional Tourism Website

Regional Marketing/Awareness Key Strategies

- 1) Expand multi-regional marketing campaigns involving the New River Valley Economic Development Alliance, and similar organizations throughout Western Virginia.
- 2) Study the feasibility of a Destination Marketing Organization or Convention and Visitors Bureau and develop implementation strategies based on findings.
- 3) Participate in, support, and encourage southwestern Virginia initiatives such as 'Round the Mountain, Crooked Road, and Heartwood Center.
- 4) Identify, develop, and package the region's inventory of historical assets and arts and cultural activities, natural features, and events to support external marketing.

Priority 6: Preserve Natural and Historic Areas

Goal: Preserve the natural and historic assets within the region to protect the character and quality of the regional environment.

Objective 1: Manage the impacts of existing and future land uses in order to preserve the character and quality of the regional environment.

Objective 2: Increase the development and support of local family farms.

Preserve Natural and Historic Areas Key Strategies

- 1) Develop educational, networking and mentoring programs to support and encourage the continuation of family farms; including farmers markets and regional aggregation facilities.
- 2) Implement “Farms to School” programs, which would widen the market for locally grown produce and products.
- 3) Utilize tourism assets as a way to preserve open spaces, historic sites and key natural attractions.
- 4) Improve land use planning and practices to preserve the region's rural character.

Priority 7: Business Friendly Governance and Representation

Goal: Promote a business friendly environment through governments cooperating with businesses at the local level and advocating for them at the state and federal levels.

Objective 1: Bring a voice to the policy table on behalf of the region.

Objective 2: Ensure the safety of the region's citizens.

Governance Key Strategies

- 1) Seek representation on State Commissions and Committees.
- 2) Provide input to State from regional economic development organizations and planning districts.
- 3) Support police, fire, and medical (emergency and non-emergency) operations throughout the region.
- 4) Provide youth programs and support.



Gathering of NRV Local Elected Officials

Chapter 3: PROJECT EVALUATION FOR 2013 – 2014

The 2014 Project Package represented the priorities of the region as of May 2013. Following is a review of projects identified in the previous year's CEDS. The status of each project is marked with an "X" in the table to show project desirability, planning, funding sources, and if the project was completed with the past year. Projects are evaluated based on the following descriptions.

Planning

Planning is the general term used to indicate ongoing development of a project. This may include:

- Holding project meetings
- Studies including feasibility studies
- Engineering and architectural reports
- Completion of required forms, permits, processes
- Any other activity indicating pursuit of the project

Funding

The formal funding request from Federal agencies is often a two step process which begins with a pre-application. If the project is viewed favorably, the sponsoring agency is invited to submit an application. A project is considered "Funded" following award notification when grant agreements are complete.

Completed

A construction project is considered completed when the construction is entirely finished. A program (non-construction) is considered completed when it is implemented.

New River Valley 2014 Project Package Evaluation

Project Status

Area	Description	Total Funding					Completed	Notes
		Desired	Planning	Pre-App'l	Application	Funded		
Blacksburg	Huckleberry Trail Extension Assist in the construction of the Huckleberry Trail extension from Prices Fork to Glade Road. Will connect the Hethwood Community to the Heritage Park and then link to the National Forest. Grading, site amenities, and surfacing are needed for this project.	X	X	X	X	X	X	Complete 2014
Christiansburg	Phase II of the Route 114 widening project Widening Route 114 from Walters Drive Area to the New River Valley Mall Area	X	X		X	X		Construction nearing completion.
Christiansburg	Interchange ramp at Route 460 Bypass and N. Franklin Street Connection of east bound 460 Bypass to west bound Business 460	X	X					
Christiansburg	Christiansburg Institute Cultural Experience, Cultural Learning Curriculum, Oral History, and Site preservation.	X						
Christiansburg	Upgrade of Waste Water Plant Upgrade waste water plant to accommodate 8 million gallons per day	X						
Christiansburg	Phase II, Huckleberry Trail Extension Extension of the existing Huckleberry Trail from the present terminus at the New River Valley Mall to the south side of Route 114, including pedestrian bridge.	X	X		X	X		Anticipated bridge opening fall 2014
Christiansburg	Phase III, Huckleberry Trail Extension Extension of Huckleberry Trail from the south side of Route 114 near the New River Valley Mall to the Christiansburg Recreation Center	X	X		X	X		Complete 2014
Christiansburg	Emergency Services Station Emergency Services Station located on Quin W. Stuart Blvd	X						
Christiansburg	Passenger Rail Station in Christiansburg To develop a passenger rail station in the Town of Christiansburg.	X						
Christiansburg	Railroad Street Water Extension Installation of 400 LF of 6-inch water main	X						
Christiansburg	Phase IB of the Downtown Enhancement Project South side of East Main Street – new sidewalks, planting, paving.	X						
Christiansburg	Public Works Complex Moving current complex out of the floodplain	X						
Dublin	Dublin Fire Department Expansion To add two bays.	X	X					
Floyd County	Rocky Knob Interpretative Center Reg. Collaborative (Floyd Co) A bi-county commission is working on the development of a major tourism destination along the Blue Ridge Parkway. A lodge and interpretive center are planned.	X	X		X	X		
Floyd County	Phase II Floyd Innovation Center	X						EDA, ARC, Tobacco Commission funding. Expected completion fall 2014.
Floyd County	Regional Food Aggregating/Processing Center Value-added processing center for local produce and potentially local milk. The facility would serve as aggregator for larger buyers, as well as provide co-packing facilities and a commercial kitchen leaseable by local food businesses.	X						

New River Valley 2014 Project Package Evaluation

Project Status

Area	Description	Total Funding					Completed	Notes
		Desired	Planning	Pre-App'l	Application	Funded		
Floyd County	Jacksonville Center E-Commerce Project (Floyd Co) Establishment of an e-commerce catalog of crafts and products.	\$50,000	X					
Floyd County	Multi-Tenant Facility for Floyd County To house growing businesses as well as meet space needs for governmental agencies and non-profits.	\$2,000,000	X	X	X	X	EDA, ARC, Tobacco Commission funding. Expected completion fall 2014.	
Floyd County	Phase II Development of Floyd Regional Commerce Center Grade lots 1 and 2.	\$1,500,000	X	X				
Floyd County	Floyd Revolving Loan Fund Establish microlending fund for small businesses within Floyd County.	\$200,000	X					
Floyd County	Marketing Floyd County Regional Commerce Center As a locality that already has advanced telecommunications infrastructure, access to higher education opportunities, available and affordable workforce, and available industrial space, Floyd County is seeking funding to create a model of promotion for Southwest Virginia.	\$50,000	X					
Floyd County	Route 8 Improvements (South) (Floyd Co) Road Improvements on Route 8 southbound from Floyd, South.	\$1,500,000	X					
Floyd County	Science Technology Engineering and Math (STEM) Program for 8th-12th graders	\$300,000	X					
Floyd County	Floyd County Innovation Program Business concept/plan competition.	\$50,000	X					
Floyd County	Trails for Floyd (pedestrian, biking, and hiking) Extension of trail corridors from the town to the county as outlined in the comprehensive plan.	\$5,000,000	X					
Floyd County	Geo-engineering Studies Groundwater Resources in Floyd County To identify groundwater resources and calculate carrying capacity. Recharge areas and other important water resource areas would be mapped.	\$250,000	X					
Floyd County	Floyd County Health and Human Services Complex One-stop-shop in Floyd that would enable citizens to access needed services	\$2,000,000	X					
Floyd County	Engineering Studies on Extending Water and Sewer to areas of Floyd Co. To study water and sewer extensions and to understand hydrogeologic systems resources. Include protecting critical recharge and well-head areas.	\$1,500,000	X					
Floyd County	Trail Around Floyd Commerce Center To develop a walking trail around the new Commerce Center in Floyd.	\$400,000	X					
Floyd County/Floyd Town	Affordable Housing Implementation Construction and rehabilitation of affordable housing within Floyd County and Town.	\$340,000	X	X	X	X	Application pending	
Floyd County/Town	Floyd Public Transit Study viability of public transit in county/town	\$25,000	X					
Floyd Town	Floyd Town Trails Program (final phase) New and upgraded sidewalks within the town.	\$300,000	X					
Floyd Town	Lineberry Memorial Park Development Design and construction of stage for performances.	\$1,500,000	X					

New River Valley 2014 Project Package Evaluation

Project Status

Area	Description	Total Funding						Notes
		Desired	Planning	Pre-App'l	Application	Funded	Completed	
Giles County	Giles Multi-tenant Business Facility (Giles Co) A facility located in the Wheatland Eco Park.	X						
Giles County	Eggleston Water Extension Phase 2 (Giles Co) Extend water service to 160 residences.	X	X					
Giles County	Route 635 Water Extension (Giles Co) Provide public water to approximately 150 residents in the Big Stony Community of Giles County.	X						
Giles County	Clendennin Water Extension (Giles Co) Provide public water to approximately 50 residents in the Clendennin community of Giles County.	X	X					
Giles County	Ingram Village Sewer (Giles Co) Put in sewer lines.	X	X					
Giles County	Public Transportation Connections to Blacksburg, Virginia Tech, and other major employment centers.	X						
Giles County	Hoges Chapel Water Tank Replacement Project Replacement of 40 year old water tank and 23,000 feet of 10 inch water line	X	X	X				
Glen Lyn	Glen Lyn Park Modern bathroom, wastewater hook ups, information center, and open-air theater. Water and sewer to each campsite at the park. Also a new location for a boat ramp and sidewalk connecting the Park to the Municipal Building.	X	X					
Glen Lyn	Glen Lyn Regional Wastewater Facility To combine wastewater from Rich Creek and Glen Lyn into a single operation. The Towns will undertake the project.	X	X					
Montgomery County	Development of Route 177 Corporate Park	X						
Montgomery County	Rt. 114 Widening From Christiansburg Town limits to Radford Army Ammunition Plant	X	X	X				
Montgomery County	Southgate Parkway Construction of ramps on Route 460 at Southgate Parkway entrance to Virginia Tech.	X	X	X				VDOT SYIP
Montgomery County	Expansion of Falling Branch Industrial Park Water, sewer, roads, and grading improvements	X	X					
Montgomery County	Route 8 Widening Project Widening Route 8 from the Montgomery and Floyd County line to the Town of Christiansburg.	X						
Montgomery County	Route 177 Water and Sewer Improvements	X						
Narrows	Upgrades and improvements at Mill Creek Nature Park	X	X					
Narrows	Upgrades/improvements to Lurich Road ballfields	X	X					
Narrows	Replace existing collection system piping and upgrade wastewater plan	X	X					

New River Valley 2014 Project Package Evaluation

Project Status

Area	Description	Total Funding	Desired	Planning	Pre-App'l	Application	Funded	Completed	Notes
Narrows	Replace Existing Water Lines and Collection System Piping and Upgrade Wastewater Plant The Town went online with the Giles County Public Service Authority and in response to the increased cost of purchasing water from the GCP&SA, the Town has invested millions in improvements to their system to bring water loss down. Existing collection system piping is leaking and/or broken.	\$2,300,000	X						
NRV	Preparation of New Graded Building Site at NRV Commerce Park A site to accommodate a graded building pad of a building footprint of 20 to 75 acres.	\$2,000,000	X	X					
NRV	Broadband Infrastructure Explore options for higher bandwidth to the end user.	\$8,000,000	X	X					NRV/NWA exploring options
NRV	Increase modern building stock through retrofits and new construction Modernize existing building stock through new construction or through retrofits to meet the needs of 21st century businesses.		X						
NRV	Develop a Career Pathways Task Force Investigate emerging sectors in the economy, develop multi-stage career development pathways with a range of entry/training and exit/career points to match those emerging employment sectors, and integrate the targeted career pathways approach within the public and post-secondary educational institutions.		X						
NRV	Green Challenge Waste to Energy Work with New River Resources Authority (NRRA) contractor to identify method of providing methane gas to commerce park.	\$2,000,000	X						
NRV	New River Valley Development Corporation Revolving Loan Fund Fund to provide assistance for business and non-profit development.	\$50,000	X	X					Initial funding with potential for application in 2014-2015
NRV	Creation of a Regional Destination Marketing Organization (DMO) Raise awareness of New River Valley assets	TBD	X						
NRV	Support Tower Infrastructure for Wireless Internet Connectivity Tower placement studies and streamlining of the zoning process		X	X					
NRV	Technology Magnet School: Workforce Development Designed to develop a specialized workforce in the NRV by providing advanced technology education to secondary schools. Federal funds will be used to purchase training equipment and construction of a facility.	\$8,000,000	X						
NRV	Regional Networking and Marketing of the Arts via Destination Marketing Organization (DMO) Use DMO to create a network of artisans and venues to promote New River Valley assets.	\$10,000	X						
NRV	Create a Consortium of School Districts, Community College, Economic Development and Local Business Representatives - Develop a Pilot Program Integrated Workforce Curriculum To develop an integrated workforce curriculum spanning from kindergarten to post-graduate degrees focusing on current/future business and industry needs (including Career Pathways development).	\$250,000	X						

New River Valley 2014 Project Package Evaluation

Project Status

Area	Description	Total Funding	Project Status					Notes	
			Desired	Planning	Pre-App'l	Application	Funded		Completed
NRV	NRV Airport Parallel Taxiway To provide taxiway parallel to runway and offer an opportunity to provide air access to the Industrial Park (NRV Commerce Park).	\$6,000,000	X	X	X				
NRV	Extension of Rail to Commerce Park Rail siding extension from Norfolk Southern mainline about 3,500 feet to the Commerce Park boundary and 3,500 feet to a potential building site.	\$4,600,000	X						
NRV	Small Business Development (Green/Nano/Bio) Program Develop educational program through the community college and university that support the development and/or recruitment of small businesses/industries in the green, nano and/or bio technology fields.	\$1,000,000	X						
NRV	Regional Conference/Civic Center Determine feasibility and appropriate site, engineering and architectural plans for regional conference center.	\$15,000,000	X						
NRV	Support Farms to School program throughout the region. Create education opportunities for students and support a supply of fresh foods from local farmers.	\$20,000	X						
NRV	Creation of Utility Standards Create utility standards for service providers to follow while coordinating digging between localities and service providers to install conduits or other potential uses		X						
NRV	Connectivity of Trails, Regional Trail System Interconnect various local, state and federal trails to create a continuous network in southwest Virginia.	\$800,000	X	X					
NRV	Interstate-81 Interchange Improvements Exits 89, 94, 98, 105, and 114.	TBD	X	X					
NRV	Route 100 Widening between Pulaski County and Giles County	TBD	X						
NRV	Support Public Private Partnerships for Agriculture Infrastructure Needs		X						
NRV	Implementing Project NEEMO To further the commercialization of nanotech research and development focusing on smaller specialty materials companies.	\$21,000,000	X						
NRV	Route 114 Bridge To replace the Route 114 bridge that has structural damage.	\$20,000,000	X	X	X	X	X	X	Complete 2014
NRV	Promote Agricultural Tourism Program to encourage farmers to evaluate agricultural tourism to enhance incomes.		X	X	X				Working with DHCD
NRV	Create Regional Revolving Loan Fund for Energy Audits and Retrofits Fund for New River Valley businesses and residents.		X						
NRV	Develop a Slaughterhouse or Regional Meat Processing Plant for Meat Processing and Production Develop facility to support local farmers		X						
NRV	Support Carpooling Efforts/Initiatives throughout the New River Valley Support the expansion and marketing of Ride Solutions while exploring potential for carpooling app		X	X	X	X	X	X	

New River Valley 2014 Project Package Evaluation

Project Status

Area	Description	Total Funding					Notes
		Desired	Planning	Pre-App'l	Application	Funded	
NRV	Create a Network of Growers and Producers in the Region Link New River Valley farmers markets to increase profitability.	X	X				
NRV	Intermodal Transportation Center Further explore the possibility of developing an intermodal transportation site on under-utilized US Army property near Dublin, Virginia.	X			\$8,000,000		
NRV	Centralize Marketing of Energy Efficiency Options Create a "one stop shop" where people can evaluate typical "payback" on upgrades, find a qualified energy auditor/retrofitter, navigate various funding/financing options.	X					
NRV	Develop Region-Wide Bike Paths Used as both a tourism asset and an alternative/green method of transportation.	X	X		\$10,000,000		
NRV	Access to Capital Host workshops to educate businesses on capital access opportunities in the region, i.e. 460 Angels	X					
NRV	Network of Manufacturing Companies Corporate roundtable headed by NRV Economic Development Alliance.	X	X		\$1,000,000		
NRV	Tap into Additional Networks and Professional Organizations Research and encourage "continuing ed" requirements or periodic recertification so that the workforce can build their skill sets around emerging economic sectors.	X					
NRV	Implement K-12 Curriculum on Organic Food Production	X			\$50,000		
NRV	Promote Civil War Historical Sites To promote civil war historical sites throughout the NRV.	X					
NRV	Study Data from Various Wind/Solar Demonstration Projects around the NRV Evaluate effectiveness of wind and solar projects to inform potential future projects.	X					
NRV	Conduct Farming Visioning with Agriculture Stakeholders, Farm Bureau and Extension	X	X				
NRV	New River Valley Park and Ride Lot Development Development of new park and ride facilities.	X	X	X	\$1,500,000		
NRV	Incorporate "Green" Training into Secondary and Post-secondary Vocational Construction Programs Change current curriculum in Construction Trades to include "retro fitting" remodeling for energy efficiency in homes.	X			\$500,000		
NRV	Develop and Implement a Program to Support Small Family Farms Using "Cultivating Success" Farm Mentoring Project as a model. This will also include a revolving loan fund for farm start-ups and networking between local farmers and buyers.	X					
NRV	Implement the National Energy Education Development (NEED) Program in Regional K-12 Schools Energy education in our schools.	X			\$100,000		

New River Valley 2014 Project Package Evaluation

Project Status

Area	Description	Total Funding					Completed	Notes
		Desired	Planning	Pre-App'l	Application	Funded		
NRV	Support "Communities in Schools" Program Connect community resources with schools to help students achieve success.	X						
NRV	Creation of a Fund to Remove Derelict Structures Tax advantages to remove structures alongside an education program on "how to"	X						
NRV	Support Co-Working Spaces for Businesses Utilization of underused facilities	X	X					
NRV	TransDominion Express - Capital Costs A statewide project to provide passenger rail transportation from Bristol through the New River Valley, and on to Richmond and Washington, D.C.	X			\$9,300,000			
NRV	Create Formal Regional Leadership Organization Create formal leadership organization, hold community awareness workshop, and establish certified leadership development program.	X	X		\$20,000			
NRV	Youth Planning Council Involve youth in discussing community development issues across the region.	X			\$20,000			
NRV	Creation of an Interactive CEDS Map with Project Identification GIS map to track progress of CEDS projects within the region.	X						
Pearisburg	White-Riverbend Park Trail Construct 1.1 mile loop trail and rest room.	X	X		\$60,000			
Pearisburg	White-Riverbend Park Development Phase II Development of public park on 27.7 acres of land with 1.75 miles frontage on Walker Creek and the New River. Site will include primitive camping, picnic areas, restrooms, drain field, hiking, fishing, and improved road access.	X	X		\$30,000			
Pearisburg	White-Riverbend Boat Launch - Improved Boat Access for 28 Acre Park	X			\$111,200			
Pearisburg	Bluff City Boat Launch - Improved Boat Access for New River	X	X	X	\$105,000			
Pearisburg	Community Center Renovation of Old School for Community Center Including New Electrical, Mechanical and Plumbing	X	X					
Pulaski County	Shell Building-Industrial Park Construction of a shell building at the New River Valley Commerce Park	X			\$1,500,000			
Pulaski County	Exit 101 Interchange Improvements and Connector Route 11 Provide interstate access to the proposed Veteran's Cemetery and Route 11 with an urban 3 lane typical on 4 lane right of way.	X			\$16,500,000			
Pulaski County	New River Trail Extension	X	X		\$5,000,000			
Pulaski County	Pulaski County Dispatch/Communications To upgrade Pulaski County's dispatch/communications system.	X	X	X	\$1,600,000		X	Complete 2014
Pulaski County	New Facility, Sheriff's Department New Sheriff's Department facility for Pulaski County.	X	X	X	\$900,000		X	Complete 2014
Pulaski County	Snowville Fire Department Fire Station replacement	X	X		\$2,100,000			
Pulaski County	Skyview Subdivision/Fairgrounds Area Sewer (Pulaski Co) Provide sewer to NRV Fairgrounds & 148 residences.	X	X	X	\$500,000		X	
Pulaski County	Newbern Area Enhancements Creation of Wilderness Road Exhibit and other area enhancements.	X						

New River Valley 2014 Project Package Evaluation

Project Status

Area	Description	Total Funding					Completed	Notes
		Desired	Planning	Pre-App'l	Application	Funded		
Pulaski County	Indoor Recreation - Wellness Center Indoor Recreation-Wellness Center for the citizens of Pulaski County.	X						
Pulaski Town	Town of Pulaski Business Park Expansion The acquisition and site preparation of greenspace for industrial growth.	X						
Pulaski Town	Brownfields Redevelopment Redevelopment of existing industry and housing.	X						
Pulaski Town	Dalton Building Reuse Update Dalton Building into a hotel and restaurant	X	X					
Pulaski Town	Dora Hwy Neighborhood Revitalization This neighborhood project grant is under consideration by the Department of Housing and Community Development; Comprehensive community project-sewer, water, street, new housing infill.	X	X	X		X		Nearing completion
Pulaski Town	Calfee Park Renovations (Pulaski Town) Improvements to bring the facility up to baseball standards. Visitor dugouts, dressing rooms, and infrastructure improvements are needed.	X						
Pulaski Town	Intensifying Blight Elimination Program The Town was awarded an EPA Brownfields Grant application in 2010.	X						
Pulaski Town	Rt. 99 Water/Sewer Extension Extend water and sewer lines to Exit 94, to encourage commercial development.	X	X					
Pulaski Town	Public Safety Facility A modern centralized facility located out of the flood plain and away from rail tracks.	X	X	X				
Pulaski Town	Enhance Bob White Boulevard and East Main Street Intersection	X	X					
Pulaski Town	Sewer Collection/Pump Station Improvements Infrastructure improvements at Stations 4A and 4B	X	X					
Pulaski Town	Water Filtration Plant Improvements Modernization of the current water filtration plant.	X						
Pulaski Town	Bicycle Lane and Trail Improvements Improving bike accessibility for critical pathways throughout the Town.	X	X					
Radford	Passenger Rail Station in Radford To develop a passenger rail station in the City of Radford.	X	X					
Radford	High Meadows Development (Radford) Improve the water system to include line work and a water tank.	X						
Radford	Radford Village Water Line Replacement 3,225 linear feet of 6" main water line would be replaced with an 8" service throughout the Radford Village residential area improving service reliability and water flow to forty homes.	X						
Radford	Wildwood Park Entrance Improve the Park entrance with parking facilities, a kiosk, pergola, new gate, and interpretive exhibits.	X						
Radford	Smartway Service Extension to the City of Radford and Radford University To connect Radford and Radford University to the existing network.	X						
Radford	Miscellaneous drainage project Design and construction of drainage improvements identified in 1993 Facility Plan in various locations throughout the city. The improvements would prevent runoff damage to public and private properties.	X						

New River Valley 2014 Project Package Evaluation

Project Status

Area	Description	Total Funding	Project Status						Notes
			Desired	Planning	Pre-App'l	Application	Funded	Completed	
Radford	University Drive Bridge Improvements and repairs needed to the 25 year old University Drive Bridge which includes deck repairs, waterproofing, painting, fencing, and sidewalk repairs and corrosion maintenance.	\$531,000	X						
Radford	Radford Ingles Overlook and Amphitheater Amphitheater engineering and construction for outdoor events.		X						
Radford	Third Avenue Parking Lot The public parking lot located adjacent to Grove Avenue and Third Avenue would be improved to include a stormwater system, paving, landscaping, traditional light poles and hanging baskets. This project is needed to improve the lot's aesthetic appeal.	\$250,000	X						
Radford	Soccerfield/Football field To construct two playing fields adjacent to the Radford Riverfront.	\$400,000	X						
Rich Creek	Rich Creek Downtown Enhancement Project Ensure the stability and success of downtown Rich Creek.	\$1,250,000	X	X		X			

Chapter 4: NEW ANNUAL PROJECT PACKAGE REPORT

4.1 Project Evaluation Criteria - Reviewed April 2014

As stated in the Organization and Management section of this report, the PDC Board members reviewed and updated the project evaluation criteria.

PROJECT TYPE (Points)

Priority Level 1 (8)

- Water, sewer and communication utilities
- Employment Creation/Retention
 - Technology and Industrial
- Entrepreneurial/Small Business Assistance
- Regional/Local School & Educational Facilities & Programs
- Transportation Planning
- Housing Production
- Technology Career Facilities
- Clean Energy Projects
- Tourism
- Community Facilities¹
- Marketing/Promotion of Assets
- Senior Care Facilities
- Value-Added Local Food

Priority Level 2 (6)

- Primary/Arterial Roads & Transportation Maintenance
- Passenger Rail and Airport Service
- Facilities for Protected Populations
- Comprehensive Community Development²
- Employment Creation/ Retention-Commercial
- Mixed Use Development
- Central Business District Revitalization
- Green Building Projects and Natural/Cultural Resources Protection
- Public Transportation Connections

Priority Level 3 (4)

- Secondary Roads
- Community Centers/Recreation
- Other Economic Development
- Homeownership Program
- Drainage/Flood Control

Priority Level 4 (2)

- Other Housing
- Other Community Facilities
- Other Community Services Facilities³
- Community Development Programs
- Drought Management

¹ Water services, wastewater services, drainage improvements, and street improvements.

² Targets neighborhood improvements including; housing, water, sewer, streets, drainage, sidewalks, solid waste/garbage, debris removal, street lighting, recreation, police/fire protection, and other neighborhood specific items.

³ Targets LMI persons needs for day care facilities, facilities for protected populations, community centers, health clinics, hospitals, and skill-building facilities for youth and the unemployed.

OTHER CRITERIA

While “project type” links the project criteria to the CEDS Goals and Strategies, there are other important factors in ranking individual projects. These factors are represented in the following criteria:

1. Investment Relationship: The project is a significant investment in relation to the economy of the Planning District.

Points

- 5 A. Proposed investment directly supports high skill/high wage jobs.
- 3 B. Proposed investment results in an environment to support high skill/high wage jobs.
- 2 C. Proposed investment results in jobs having a regional average wage.
- 1 D. Proposed investment is to support high skill/high wage jobs.
- 0 E. Does not support job creation with above average wages.

2. Regional Impact: The impact of a project is in relation to the number of jurisdictions participating or impacted in reference to services and money invested.

Points

- 8 A. Region-Wide Impact
- 4 B. Four to Five Jurisdictions Participating or Impacted
- 2 C. Two to Three Jurisdictions Participating or Impacted
- 1 D. One Jurisdiction Participating or Impacted

3. Regional Economic Clusters: Economic clusters reflect competitiveness of a regional economic sector versus national trends and job growth.

Points

- 8 A. Project Relates to High Job Growth, High Geographic Concentration Clusters
- 6 B. Project Relates to High Job Growth, Lower Geographic Concentration Clusters
- 4 C. Project Relates to Job Loss, High Geographic Concentration Clusters
- 0 D. Project Relates to Job Loss, Low Geographic Concentration Clusters

4. Per Capita Income: Utilizing the latest available data, per capita income will be used in evaluating project significance. City-County/Town rank will be utilized, while in cases of multiple jurisdictions, the average rank will be determined.

Points

- 3 A. If less than or equal to 60% of State per capita income
- 2 B. If 61 - 74% of State per capita income
- 1 C. If 75 - 99% of State per capita income
- 0 D. If greater than or equal to the State per capita income

5. Unemployment Rate: Utilizing the latest annual average figures available, unemployment rates will be used in evaluating project significance. City-County/Town will be utilized, while in cases of multiple jurisdictions, the average rank will be determined.

Points

- 3 A. If 10% or more above State average (formerly 50%)
- 2 B. If 5 - 10% above State average (formerly 25-49%)
- 1 C. If 1 – 5% above State average (formerly 1-24%)
- 0 D. If equal to or below State average

6. Relative Jurisdictional Stress: A composite index prepared by the Commission on Local Government to compare the relative strengths of the jurisdictions in the State.

Points

- 2 A. High stress
- 1 B. Above average stress
- 0 C. Below average stress

7. Relationship to Private Investments: Capital investments from private sources relate to the significance of the project.

Points

- 5 A. More than 50% Private Investment
- 3 B. 25-49% Private Investment
- 2 C. Private Investment below 25%
- 0 D. No Private Investment

8. Relationship to Previous Investment

Points

- 2 A. New Service or Facility; Expansion of Service from an Existing Service
- 1 B. Replacement of Existing Service or Facility

9. Readiness to Initiate Project

Points

- 5 A. Jurisdictional Commitment and Final Plans and Specifications-Application Filed
- 4 B. Jurisdictional Commitment - Preliminary Plans and Specifications-Pre-application Filed
- 2 C. Jurisdictional Commitment, but no Plans and Specifications-Desired Project
- 1 D. No Jurisdictional Commitment, but Preliminary Plans and Specifications- Pre-application/Application
- 0 E. No Jurisdictional Commitment and no Plans and Specifications- No Pre-application/Application

10. Public Private Partnership

Points

- 5 A. Significant Public Private Partners
- 2 B. A Public Private Partner
- 0 C. No Public Private Partner

11. Relationship to “Green” Practices

Points

- 5 A. Project directly creates “green” jobs
- 4 B. Project implements “green practices” with certification
- 2 C. Project implements “green practices”
- 1 D. Project results in recycling or reuse
- 0 E. Little or no “green” commitment

12. Relationship to Natural Resources

Points

- 5 A. Project sets aside land for conservation
- 3 B. Project compliments natural assets
- 0 C. Project does not benefit natural resources
- 2 D. Project is a detriment to natural resources

13. Directly Correlates to EDA Investment Priorities

- A. Collaborative Regional Innovation
- B. Public/Private Partnerships
- C. National Strategic Priorities
- D. Global Competitiveness
- E. Environmentally-Sustainable Development
- F. Economically Distressed and Underserved Communities

1 point/priority

14. Utility/Infrastructure Availability (Maximum 6 points)

- A. Public Water
- B. Sanitary Sewer and Storm Water Treatment
- C. Electricity
- D. Telephone/Broadband
- E. Natural Gas
- F. All Season Road
- G. Rail Access

1 point/utility

In addition to the above criteria, all of the projects are reviewed for relationships to regional markets in order to maximize the return on taxpayer investment. Proposed projects are proactive trying to anticipate the economic changes in the region and continue to diversify the economy.

4.2 Evaluating Projects

Projects remaining from the 2012 Project package as well as new project ideas are evaluated and ranked using the above criteria. While all the criteria are important, several are based directly on the most current economic data. For a summary of that data, see Tables 1, 2 and 3 below. For the scores and ranked projects, see the **New River Valley 2014 Annual Project Package, page 33**.

Table 5: Per Capita Income

Jurisdiction	2008-2012	% of VA	Population
Floyd County	\$21,855	65.6%	15,268
Giles County	\$23,766	71.3%	17,149
Montgomery County	\$23,292	69.9%	94,179
Pulaski County	\$22,231	66.7%	34,869
City of Radford	\$15,748	47.3%	16,511
New River Valley	\$21,822	66.9%	177,976
Virginia	\$33,326	100%	8,014,955

Source: 2008-2012 American Community Survey 5 Year Estimates

Table 6: Unemployment Rate

Jurisdiction	Percent
Floyd County	5.6%
Giles County	6.0%
Montgomery County	5.2%
Pulaski County	5.7%
City of Radford	6.9%
New River Valley	5.6%
Virginia	5.3%

Source: Virginia Workforce Connection, March 2014

Note: 10% above the Virginia Level would be 5.72% or more; 5-10% would be 5.46% to 5.719%

Table 7: Fiscal Stress Scores by Locality

Jurisdiction	Fiscal Stress
Floyd County	Below Average
Giles County	Above Average
Montgomery County	Above Average
Pulaski County	Above Average
City of Radford	High

Source: Virginia Commission on Local Governments, January 2012.

New River Valley Annual Project Package 2015

Score	Area	Description	Fed. \$	State \$	Local \$	Total Funding	Const. Date	Responsible Agency
49	NRV	Preparation of New Graded Building Site at NRV Commerce Park A site to accommodate a graded building pad of a building footprint of 20 to 75 acres.	\$990,000	\$885,000	\$125,000	\$2,000,000	2015	Virginia's First Regional Industrial Facilities Authority
49	NRV	Broadband Infrastructure Explore options for higher bandwidth to the end user.				\$8,000,000	2014-2015	Private Enterprises and NRV Localities
48	NRV	Develop a Career Pathways Task Force Investigate emerging sectors in the economy, develop multi-stage career development pathways with a range of entry/training and exit/career points to match those emerging employment sectors, and integrate the targeted career pathways approach within the public and post-secondary educational institutions.					2014	WIB, Education Providers
48	NRV	Green Challenge Waste to Energy Work with New River Resources Authority (NRRRA) contractor to identify method of providing methane gas to commerce park.	\$1,000,000		\$1,000,000 (private)	\$2,000,000	2014	VA's First Regional Industrial Facility Authority
48	NRV	New River Valley Development Corporation Revolving Loan Fund Fund to provide assistance for business and non-profit development.	\$25,000		\$25,000	\$50,000	2014	New River Valley Development Corporation
48	NRV	Creation of a Regional Destination Marketing Organization (DMO) Raise awareness of New River Valley assets				TBD	2014	NRV Localities, Tourism Offices
47	NRV	Support Tower Infrastructure for Wireless Internet Connectivity Tower placement studies and streamlining of the zoning process					2014	NRV Network Wireless Authority

New River Valley Annual Project Package 2015

Score	Area	Description	Fed. \$	State \$	Local \$	Total Funding	Const. Date	Responsible Agency
46	Giles County	Giles Multi-tenant Business Facility (Giles Co) A facility located in the Wheatland Eco Park.				\$2,000,000	2014	Giles County IDA
46	NRV	Technology Magnet School: Workforce Development Designed to develop a specialized workforce in the NRV by providing advanced technology education to secondary schools. Federal funds will be used to purchase training equipment and construction of a facility.	\$4,000,000	\$2,000,000	\$2,000,000	\$8,000,000	2015	New River Community College & School Divs
45	Christiansburg	Phase II of the Route 114 widening project Widening Route 114 from Walters Drive Area to the New River Valley Mall Area		\$23,690,000		\$23,690,000	2014	VDOT, Christiansburg
45	NRV	Regional Networking and Marketing of the Arts via Destination Marketing Organization (DMO) Use DMO to create a network of artisans and venues to promote New River Valley assets.				\$10,000	2014	
44	Floyd County	Rocky Knob Interpretative Center Reg. Collaborative (Floyd Co) A bi-county commission is working on the development of a major tourism destination along the Blue Ridge Parkway. A lodge and interpretive center are planned.	\$8,000,000		\$2,000,000	\$10,000,000	2015	Rocky Knob
44	NRV	Create a Consortium of School Districts, Community College, Economic Development and Local Business Representatives - Develop a Pilot Program Integrated Workforce Curriculum To develop an integrated workforce curriculum spanning from kindergarten to post-graduate degrees focusing on current/future business and industry needs (including Career Pathways development).				\$250,000	2014	
44	NRV	NRV Airport Parallel Taxiway To provide taxiway parallel to runway and offer an opportunity to provide air access to the Industrial Park (NRV Commerce Park).	\$5,880,000		\$120,000	\$6,000,000	2014	Airport Commission
43	Floyd County	Phase II Floyd Innovation Center	\$1,000,000	\$1,000,000	\$1,000,000	\$3,000,000	2015	Economic Development Authority of Floyd County

New River Valley Annual Project Package 2015

Score	Area	Description	Fed. \$	State \$	Local \$	Total Funding	Const. Date	Responsible Agency
43	Floyd County	Regional Food Aggregating/Processing Center Value-added processing center for local produce and potentially local milk. The facility would serve as aggregator for larger buyers, as well as provide co-packing facilities and a commercial kitchen leasable by local food businesses.	\$1,000,000	\$500,000	\$500,000	\$2,000,000	2014	Floyd County
43	Montgomery County	Development of Route 177 Corporate Park	\$15,000,000	\$4,000,000	\$1,000,000	\$20,000,000	TBD	Montgomery County EDA
43	Montgomery County	Rt. 114 Widening From Christiansburg Town limits to Radford Army Ammunition Plant	\$50,400,000	\$12,600,000		\$63,000,000	2018	VDOT/Montgomery County
43	NRV	Extension of Rail to Commerce Park Rail siding extension from Norfolk Southern mainline about 3,500 feet to the Commerce Park boundary and 3,500 feet to a potential building site.	\$2,300,000	\$750,000	\$1,210,000	\$4,600,000	2014	Virginia's First Regional Industrial Facilities Authority
43	NRV	Small Business Development (Green/Nano/Bio) Program Develop educational program through the community college and university that support the development and/or recruitment of small businesses/industries in the green, nano and/or bio technology fields.	\$500,000		\$500,000	\$1,000,000	2014	Universities, NRCC, School Divisions
42	Floyd County	Jacksonville Center E-Commerce Project (Floyd Co) Establishment of an e-commerce catalog of crafts and products.				\$50,000	2014	Jacksonville Center, Inc.
42	NRV	Increase modern building stock through retrofits and new construction Modernize existing building stock through new construction or through retrofits to meet the needs of 21st century businesses.					2015-16	NRV Economic Development Alliance
42	NRV	Support Farms to School program throughout the region. Create education opportunities for students and support a supply of fresh foods from local farmers.				\$20,000	2014-2014	

New River Valley Annual Project Package 2015

Score	Area	Description	Fed. \$	State \$	Local \$	Total Funding	Const. Date	Responsible Agency
42	NRV	Creation of Utility Standards Create utility standards for service providers to follow while coordinating digging between localities and service providers to install conduits or other potential uses						
42	NRV	Connectivity of Trails, Regional Trail System Interconnect various local, state and federal trails to create a continuous network in southwest Virginia.	\$400,000		\$400,000	\$800,000	2014	Trail Operators
41	Floyd County	Multi-Tenant Facility for Floyd County To house growing businesses as well as meet space needs for governmental agencies and non-profits.	\$1,600,000	\$200,000	\$200,000	\$2,000,000	2014	Floyd County
41	Montgomery County	Southgate Parkway Construction of ramps on Route 460 at Southgate Parkway entrance to Virginia Tech.	\$124,000,000	\$31,000,000		\$155,000,000	TBD	VDOT
41	NRV	Interstate-81 Interchange Improvements Exits 89, 94, 98, 105, and 114.				TBD	2014-20	VDOT
41	NRV	Route 100 Widening between Pulaski County and Giles County				TBD	2014-20	VDOT
41	NRV	Support Public Private Partnerships for Agriculture Infrastructure Needs					2014	
41	Pulaski County	Shell Building-Industrial Park Construction of a shell building at the New River Valley Commerce Park	\$750,000	\$750,000		\$1,500,000	2014	Pulaski County

New River Valley Annual Project Package 2015

Score	Area	Description	Fed. \$	State \$	Local \$	Total Funding	Const. Date	Responsible Agency
41	Pulaski Town	Town of Pulaski Business Park Expansion The acquisition and site preparation of greenspace for industrial growth.	\$1,000,000		\$1,000,000	\$2,000,000	2015	EDA, Town of Pulaski
39	Floyd County	Phase II Development of Floyd Regional Commerce Center Grade lots 1 and 2.	\$1,000,000		\$500,000	\$1,500,000	2014	Floyd County, Economic Development Authority of Floyd County
39	NRV	Implementing Project NEEMO To further the commercialization of nanotech research and development focusing on smaller specialty materials companies.	\$7,000,000	\$6,000,000	\$8,000,000	\$21,000,000	2014	VA's First Regional Industrial Facility Authority-Participation Committee
39	NRV	Route 114 Bridge To replace the Route 114 bridge that has structural damage.		\$20,000,000		\$20,000,000	2014	VDOT
39	NRV	Promote Agricultural Tourism Program to encourage farmers to evaluate agricultural tourism to enhance incomes.					2014	Virginia Tourism Corporation/Round the Mountain
39	NRV	Create Regional Revolving Loan Fund for Energy Audits and Retrofits Fund for New River Valley businesses and residents.						
39	Rich Creek	Rich Creek Downtown Enhancement Project Ensure the stability and success of downtown Rich Creek.		\$1,000,000	\$250,000	\$1,250,000	2014	Rich Creek Town
38	NRV	Regional Conference/Civic Center Determine feasibility and appropriate site, engineering and architectural plans for regional conference center.	\$7,000,000		\$8,000,000	\$15,000,000	2016	Virginia's First and Partners

New River Valley Annual Project Package 2015

Score	Area	Description	Fed. \$	State \$	Local \$	Total Funding	Const. Date	Responsible Agency
38	NRV	Develop a Slaughterhouse or Regional Meat Processing Plant for Meat Processing and Production Develop facility to support local farmers					2014-15	Rural Development- Sustain Floyd Planning Grant
38	NRV	Support Carpooling Efforts/Initiatives throughout the New River Valley Support the expansion and marketing of Ride Solutions while exploring potential for carpooling app						
38	NRV	Create a Network of Growers and Producers in the Region Link New River Valley farmers markets to increase profitability.						
38	Pulaski County	Exit 101 Interchange Improvements and Connector Route 11 Provide interstate access to the proposed Veteran's Cemetery and Route 11 with an urban 3 lane typical on 4 lane right of way.	\$2,000,000	\$1,000,000		\$16,500,000	2020	Virginia's First/Army
38	Pulaski Town	Brownfields Redevelopment Redevelopment of existing industry and housing.	\$500,000		\$500,000	\$1,000,000	2014	Pulaski Town and EPA
37	Blacksburg	Huckleberry Trail Extension Assist in the construction of the Huckleberry Trail extension from Prices Fork to Glade Road. Will connect the Hethwood Community to the Heritage Park and then link to the National Forest. Grading, site amenities, and surfacing are needed for this project.			\$100,000	\$100,000	2014	Town of Blacksburg
37	NRV	Intermodal Transportation Center Further explore the possibility of developing an intermodal transportation site on under-utilized US Army property near Dublin, Virginia.	\$4,000,000		\$4,000,000	\$8,000,000	2014	VA's First/US Army
37	NRV	Centralize Marketing of Energy Efficiency Options Create a "one stop shop" where people can evaluate typical "payback" on upgrades, find a qualified energy auditor/retrofitter, navigate various funding/financing options.						

New River Valley Annual Project Package 2015

Score	Area	Description	Fed. \$	State \$	Local \$	Total Funding	Const. Date	Responsible Agency
37	NRV	Develop Region-Wide Bike Paths Used as both a tourism asset and an alternative/green method of transportation.	\$5,000,000		\$5,000,000	\$10,000,000	2014	NRV/PDC, Localities
37	NRV	Access to Capital Host workshops to educate businesses on capital access opportunities in the region, i.e. 460 Angels						
36	NRV	Network of Manufacturing Companies Corporate roundtable headed by NRV Economic Development Alliance.	\$500,000	\$250,000	\$250,000	\$1,000,000	2014	NRV/PDC
36	NRV	Tap into Additional Networks and Professional Organizations Research and encourage "continuing ed" requirements or periodic recertification so that the workforce can build their skill sets around emerging economic sectors.					2014	WIB, Local Businesses
36	NRV	Implement K-12 Curriculum on Organic Food Production				\$50,000	2014	
36	NRV	Promote Civil War Historical Sites To promote civil war historical sites throughout the NRV.					2014	Southwest Virginia Cultural Heritage Foundation
36	NRV	Study Data from Various Wind/Solar Demonstration Projects around the NRV Evaluate effectiveness of wind and solar projects to inform potential future projects.						
36	NRV	Conduct Farming Visioning with Agriculture Stakeholders, Farm Bureau and Extension						

New River Valley Annual Project Package 2015

Score	Area	Description	Fed. \$	State \$	Local \$	Total Funding	Const. Date	Responsible Agency
35	Floyd County	Floyd Revolving Loan Fund Establish microlending fund for small businesses within Floyd County.	\$200,000			\$200,000	2014	Floyd IDA
35	Floyd County	Marketing Floyd County Regional Commerce Center As a locality that already has advanced telecommunications infrastructure, access to higher education opportunities, available and affordable workforce, and available industrial space, Floyd County is seeking funding to create a model of promotion for Southwest Virginia.			\$50,000	\$50,000	2014	Floyd County
35	Giles County	Public Transportation Connections to Blacksburg, Virginia Tech, and other major employment centers.	\$1,600,000		\$400,000	\$2,000,000	2014	Giles County
35	Montgomery County	Expansion of Falling Branch Industrial Park Water, sewer, roads, and grading improvements	\$19,500,000	\$5,200,000	\$1,300,000	\$26,000,000	2015	Montgomery County EDA
34	Floyd County	Route 8 Improvements (South) (Floyd Co) Road Improvements on Route 8 southbound from Floyd, South.		\$1,500,000		\$1,500,000	2014	VDOT
34	Narrows	Upgrades and improvements at Mill Creek Nature Park					2014-15	Town of Narrows
34	NRV	New River Valley Park and Ride Lot Development Development of new park and ride facilities.	\$750,000	\$750,000		\$1,500,000	2014	VDOT
34	NRV	Incorporate "Green" Training into Secondary and Post-secondary Vocational Construction Programs Change current curriculum in Construction Trades to include "retro fitting" remodeling for energy efficiency in homes.				\$500,000	2014	CTE Directors, Community College Workforce Departments

New River Valley Annual Project Package 2015

Score	Area	Description	Fed. \$	State \$	Local \$	Total Funding	Const. Date	Responsible Agency
34	NRV	Develop and Implement a Program to Support Small Family Farms Using "Cultivating Success" Farm Mentoring Project as a model. This will also include a revolving loan fund for farm start-ups and networking between local farmers and buyers.					2014	
34	Pearisburg	Whitt-Riverbend Park Trail Construct 1.1 mile loop trail and rest room.		\$30,000	\$30,000	\$60,000	2014-15	Pearisburg Town
34	Pearisburg	Whitt-Riverbend Park Development Phase II Development of public park on 27.7 acres of land with 1.75 miles frontage on Walker Creek and the New River. Site will include primitive camping, picnic areas, restrooms, drain field, hiking, fishing, and improved road access.			\$30,000	\$30,000	2014-18	Town of Pearisburg
34	Pearisburg	Whitt-Riverbend Boat Launch - Improved Boat Access for 28 Acre Park		\$83,400	\$27,800	\$111,200	2014-15	Town of Pearisburg and Giles County
34	Pearisburg	Bluff City Boat Launch - Improved Boat Access for New River		\$78,750	\$26,250	\$105,000	2014-15	Town of Pearisburg and Giles County
34	Pulaski Town	Dalton Building Reuse Update Dalton Building into a hotel and restaurant						
33	Giles County	Hoges Chapel Water Tank Replacement Project Replacement of 40 year old water tank and 23,000 feet of 10 inch water line		\$2,600,000		\$2,600,000	2014	Giles County
33	Glen Lyn	Glen Lyn Regional Wastewater Facility To combine wastewater from Rich Creek and Glen Lyn into a single operation. The Towns will undertake the project.				\$3,000,000	2014	Glen Lyn

New River Valley Annual Project Package 2015

Score	Area	Description	Fed. \$	State \$	Local \$	Total Funding	Const. Date	Responsible Agency
33	Narrows	Upgrades/improvements to Lurich Road ballfields				\$1,100,000		Town of Narrows
33	NRV	Implement the National Energy Education Development (NEED) Program in Regional K-12 Schools Energy education in our schools.				\$100,000	2014	
33	Pulaski County	New River Trail Extension				\$5,000,000		VDOT, Pulaski County
33	Radford	Passenger Rail Station in Radford To develop a passenger rail station in the City of Radford.				\$10,000,000	2020	Radford City, MPO, DRPT
32	Christiansburg	Interchange ramp at Route 460 Bypass and N. Franklin Street Connection of east bound 460 Bypass to west bound Business 460		\$1,000,000		\$1,000,000	2014	VDOT, Christiansburg
32	Floyd County	Science Technology Engineering and Math (STEM) P program for 8th-12th graders				\$300,000	2014	Floyd County Public Schools
32	Floyd County	Floyd County Innovation Program Business concept/plan competition.				\$50,000	2014	Economic Development Authority of Floyd County
32	Floyd County/Floyd Town	Affordable Housing Implementation Construction and rehabilitation of affordable housing within Floyd County and Town.	\$340,000			\$340,000	2014-15	Floyd County, Floyd Town, and HOME

New River Valley Annual Project Package 2015

Score	Area	Description	Fed. \$	State \$	Local \$	Total Funding	Const. Date	Responsible Agency
32	NRV	Support "Communities in Schools" Program Connect community resources with schools to help students achieve success.						
32	NRV	Creation of a Fund to Remove Derelict Structures Tax advantages to remove structures alongside an education program on "how to"						
32	NRV	Support Co-Working Spaces for Businesses Utilization of underused facilities						
32	Pulaski County	Pulaski County Dispatch/Communications To upgrade Pulaski County's dispatch/communications system.				\$1,600,000	2014	Pulaski County
32	Pulaski Town	Dora Hwy Neighborhood Revitalization This neighborhood project grant is under consideration by the Department of Housing and Community Development; Comprehensive community project-sewer, water, street, new housing infill.				\$3,000,000	2014	Town of Pulaski, DHCD, CHP
31	Christiansburg	Christiansburg Institute Cultural Experience, Cultural Learning Curriculum, Oral History, and Site preservation.	\$1,500,000		\$1,500,000	\$3,000,000	2014	Christiansburg Institute
31	Christiansburg	Upgrade of Waste Water Plant Upgrade waste water plant to accommodate 8 million gallons per day	\$10,000,000			\$10,000,000	2014	Christiansburg
31	Christiansburg	Phase II, Huckleberry Trail Extension Extension of the existing Huckleberry Trail from the present terminus at the New River Valley Mall to the south side of Route 114, including pedestrian bridge.	\$657,844		\$164,461	\$822,305	2014	Montgomery County and Town of Christiansburg

New River Valley Annual Project Package 2015

Score	Area	Description	Fed. \$	State \$	Local \$	Total Funding	Const. Date	Responsible Agency
31	Christiansburg	Phase III, Huckleberry Trail Extension Extension of Huckleberry Trail from the south side of Route 114 near the New River Valley Mall to the Christiansburg Recreation Center	\$228,000		\$912,000	\$1,140,000	2014	Montgomery County, Town of Christiansburg
31	Christiansburg	Emergency Services Station Emergency Services Station located on Quin W. Stuart Blvd	\$3,000,000			\$2-\$3,000,000	2014	Christiansburg
31	Dublin	Dublin Fire Department Expansion To add two bays.	\$750,000			\$750,000	2014	Dublin Town/Pulaski County
31	NRV	TransDominion Express - Capital Costs A statewide project to provide passenger rail transportation from Bristol through the New River Valley, and on to Richmond and Washington, D.C.		\$9,300,000		\$9,300,000	2015	VA Department of Rail and Public Transportation
31	Pulaski County	New Facility, Sheriff's Department New Sheriff's Department facility for Pulaski County.				\$900,000	2014	Pulaski County - Sheriff
31	Pulaski County	Snowville Fire Department Fire Station replacement	\$1,680,000		\$420,000	\$2,100,000	2014	Pulaski County
31	Pulaski Town	Calfee Park Renovations (Pulaski Town) Improvements to bring the facility up to baseball standards. Visitor dugouts, dressing rooms, and infrastructure improvements are needed.	\$1,000,000			\$1,000,000	2018	Pulaski Town
30	NRV	Create Formal Regional Leadership Organization Create formal leadership organization, hold community awareness workshop, and establish certified leadership development program.				\$20,000	2014	Leadership Organizations

New River Valley Annual Project Package 2015

Score	Area	Description	Fed. \$	State \$	Local \$	Total Funding	Const. Date	Responsible Agency
30	Radford	High Meadows Development (Radford) Improve the water system to include line work and a water tank.			\$806,000	\$806,000	2014	Radford
29	Christiansburg	Passenger Rail Station in Christiansburg To develop a passenger rail station in the Town of Christiansburg.				\$10,000,000	2020	Christiansburg Town
29	Floyd Town	Floyd Town Trails Program (final phase) New and upgraded sidewalks within the town.	\$240,000		\$60,000	\$300,000	2014	Floyd Town
29	Montgomery County	Route 8 Widening Project Widening Route 8 from the Montgomery and Floyd County line to the Town of Christiansburg.	\$60,000,000	\$15,000,000		\$75,000,000	TBD	VDOT
29	Narrows	Replace Existing Water Lines and Collection System Piping and Upgrade Wastewater Plant The Town went online with the Giles County Public Service Authority and in response to the increased cost of purchasing water from the GCP&SA, the Town has invested millions in improvements to their system to bring water loss down. Existing collection system piping is leaking and/or broken.				\$2,300,000		Town of Narrows
29	Pulaski Town	Intensifying Blight Elimination Program The Town was awarded an EPA Brownfields Grant application in 2010.	\$200,000			\$200,000	2014	Town of Pulaski, EPA
29	Pulaski Town	Rt. 99 Water/Sewer Extension Extend water and sewer lines to Exit 94, to encourage commercial development.	\$1,500,000			\$1,500,000	2014	Town of Pulaski, Pulaski County
29	Radford	Radford Village Water Line Replacement 3,225 linear feet of 6" main water line would be replaced with an 8" service throughout the Radford Village residential area improving service reliability and water flow to forty homes.					2014	City of Radford
						\$117,500		

New River Valley Annual Project Package 2015

Score	Area	Description	Fed. \$	State \$	Local \$	Total Funding	Const. Date	Responsible Agency
29	Radford	Wildwood Park Entrance Improve the Park entrance with parking facilities, a kiosk, pergola, new gate, and interpretive exhibits.	\$100,000		\$50,000	\$150,000	2014	Radford
29	Radford	Smartway Service Extension to the City of Radford and Radford University To connect Radford and Radford University to the existing network.						
28	Christiansburg	Railroad Street Water Extension Installation of 400 LF of 6-inch water main				\$25,000	2014	Christiansburg
28	Christiansburg	Phase 1B of the Downtown Enhancement Project South side of East Main Street – new sidewalks, planting, paving.	\$1,191,718		\$297,929	\$1,489,647.36	2014	Town of Christiansburg, Gay and Neel, Inc.
28	Floyd County	Trails for Floyd (pedestrian, biking, and hiking) Extension of trail corridors from the town to the county as outlined in the comprehensive plan.	\$2,500,000		\$2,500,000	\$5,000,000	2014	Floyd County
28	Floyd County	Geo-engineering Studies Groundwater Resources in Floyd County To identify groundwater resources and calculate carrying capacity. Recharge areas and other important water resource areas would be mapped.	\$250,000			\$250,000	2014	Floyd County
28	Narrows	Replace existing collection system piping and upgrade wastewater plan			\$2,500,000	\$2,500,000		Town of Narrows
28	Pulaski Town	Public Safety Facility A modern centralized facility located out of the flood plain and away from rail tracks.	\$5,000,000			\$5,000,000	2015	Town of Pulaski

New River Valley Annual Project Package 2015

Score	Area	Description	Fed. \$	State \$	Local \$	Total Funding	Const. Date	Responsible Agency
27	Giles County	Eggleston Water Extension Phase 2 (Giles Co) Extend water service to 160 residences.	\$1,400,000			\$1,400,000	2014	Giles County
27	Giles County	Route 635 Water Extension (Giles Co) Provide public water to approximately 150 residents in the Big Stoney Community of Giles County.	\$2,000,000	\$1,000,000		\$3,000,000	2014	Giles County
27	Glen Lyn	Glen Lyn Park Modern bathroom, wastewater hook ups, information center, and open-air theater. Water and sewer to each campsite at the park. Also a new location for a boat ramp and sidewalk connecting the Park to the Municipal Building.				\$800,000	2015	Glen Lyn
27	Pulaski County	Skyview Subdivision/Fairgrounds Area Sewer (Pulaski Co) Provide sewer to NRV Fairgrounds & 148 residences.	\$500,000			\$500,000	2014	Pulaski County
27	Pulaski County	Newbern Area Enhancements Creation of Wildemess Road Exhibit and other area enhancements.		\$53,387	\$21,613	\$75,000	2014	Pulaski County
27	Radford	Miscellaneous drainage project Design and construction of drainage improvements identified in 1993 Facility Plan in various locations throughout the city. The improvements would prevent runoff damage to public and private properties.				\$75,000	2010-2014	City of Radford
27	Radford	University Drive Bridge Improvements and repairs needed to the 25 year old University Drive Bridge which includes deck repairs, waterproofing, painting, fencing, and sidewalk repairs and corrosion maintenance.				\$531,000	2014-15	Radford
26	Christiansburg	Public Works Complex Moving current complex out of the floodplain	\$10,000,000			\$10,000,000	2014	Christiansburg

New River Valley Annual Project Package 2015

Score	Area	Description	Fed. \$	State \$	Local \$	Total Funding	Const. Date	Responsible Agency
26	Floyd County	Floyd County Health and Human Services Complex One-stop-shop in Floyd that would enable citizens to access needed services				\$2,000,000	2015	Floyd County
26	Floyd County	Engineering Studies on Extending Water and Sewer to areas of Floyd Co. To study water and sewer extensions and to understand hydrogeologic systems resources. Include protecting critical recharge and well-head areas.	\$1,200,000	\$200,000	\$100,000	\$1,500,000	2014	Floyd County
26	NRV	Youth Planning Council Involve youth in discussing community development issues across the region.	\$10,000		\$10,000	\$20,000	2014	NRV/PDC
26	Pearisburg	Community Center Renovation of Old School for Community Center Including New Electrical, Mechanical and Plumbing	\$2,000,000				2015	Town of Pearisburg
26	Pulaski County	Indoor Recreation - Wellness Center Indoor Recreation-Wellness Center for the citizens of Pulaski County.			\$7,000,000	\$7,000,000	2014	Pulaski County- Recreation
25	Floyd County	Trail Around Floyd Commerce Center To develop a walking trail around the new Commerce Center in Floyd.	\$200,000		\$200,000	\$400,000	2014	Floyd County
25	Giles County	Clendennin Water Extension (Giles Co) Provide public water to approximately 50 residents in the Clendennin community of Giles County.	\$2,000,000			\$2,000,000	2014	Giles County
25	Montgomery County	Route 177 Water and Sewer Improvements	\$4,800,000	\$1,200,000		\$6,000,000	2014	PSA

New River Valley Annual Project Package 2015

Score	Area	Description	Fed. \$	State \$	Local \$	Total Funding	Const. Date	Responsible Agency
25	Pulaski Town	Enhance Bob White Boulevard and East Main Street Intersection						
25	Radford	Radford Ingles Overlook and Amphitheater Amphitheater engineering and construction for outdoor events.						
24	Floyd Town	Lineberry Memorial Park Development Design and construction of stage for performances.	\$725,000		\$725,000	\$1,500,000	2014	Floyd Town
24	Giles County	Ingram Village Sewer (Giles Co) Put in sewer lines.	\$750,000		\$1,250,000	\$2,000,000	2015	Giles County
24	Pulaski Town	Sewer Collection/Pump Station Improvements Infrastructure improvements at Stations 4A and 4B		\$1,500,000	\$500,000	\$2,000,000	2014	Town of Pulaski, Peppers' Ferry Regional Wastewater Treatment Authority
24	Pulaski Town	Water Filtration Plant Improvements Modernization of the current water filtration plant.	\$500,000		\$500,000	\$1,000,000	2014	Town of Pulaski
24	Radford	Third Avenue Parking Lot The public parking lot located adjacent to Grove Avenue and Third Avenue would be improved to include a stormwater system, paving, landscaping, traditional light poles and hanging baskets. This project is needed to improve the lot's aesthetic appeal.				\$250,000	2014	City of Radford
23	Pulaski Town	Bicycle Lane and Trail Improvements Improving bike accessibility for critical pathways throughout the Town.		\$750,000	\$250,000	\$1,000,000	2015	Town of Pulaski

New Project

Funded Project

New River Valley Annual Project Package 2015

Score	Area	Description	Fed. \$	State \$	Local \$	Total Funding	Const. Date	Responsible Agency
22	Radford	Soccerfield/Football field To construct two playing fields adjacent to the Radford Riverfront.	\$200,000		\$200,000	\$400,000	2014	Radford
21	Floyd County/Town	Floyd Public Transit Study viability of public transit in county/town		\$20,000	\$5,000	\$25,000	2014	Floyd County/Town
21	NRV	Creation of an Interactive CEDS Map with Project Identification GIS map to track progress of CEDS projects within the region.						

Chapter 5: IMPLEMENTATION AND RESILIENCY

Projects with the highest rankings will have the highest impacts on the economic resiliency of the New River Valley. Highlights from the top projects include new business attraction, broadband infrastructure, workforce development, renewable energy options, access to capital for small businesses, and tourism and marketing. As these, and other, projects come to fruition, sustainable jobs will be created within a growing New River Valley.

The effects of offshoring have been felt strongly within the New River Valley over the past three decades, but new sectors are growing and becoming stronger. The Comprehensive Economic Development Strategy for the New River Valley is intended to serve as a guide for future economic development. Evaluating the effectiveness of the CEDS on the economy can be summed up using key indicators identified in the New River Valley Livability Initiative.

- Employment by sector
- Average wage by sector
- Per capita income
- Unemployment rate
- New business starts
- # and value of small business loans
- Net job growth/growth among new businesses
- Adult literacy rate
- High-school graduates pursuing advanced training
- Graduation rates (high-school, associates, bachelor, and graduate degree)
- Technical school graduates employed in field

The CEDS can communicate the values of a region. As mentioned previously, values within the New River Valley include:

1. Enhancing Living and Working Environments
2. Preserving Rural Heritage and Community Character
3. Making the Business Environment Productive and Resilient
4. Building Healthy Communities

As these values are cultivated with guidance from the CEDS, the regional economy can continue to grow. Recent successes in bringing in new companies, both domestic and international, have helped to continue building prosperity. Work needs to be done to cultivate and grow businesses using entrepreneurs who already reside within the region. Identifying leaders to

carry out the vision is an important part in this process. Moving forward, the New River Valley aims to grow the economic sectors that are already strong, turn emerging sectors into economic engines, and strengthen sectors that have been staples within the region for decades. This will lead to a healthy and resilient economy, built to last and increase the prosperity for everyone that calls the New River Valley home.

Appendix I
Minutes of the Comprehensive Economic Development Strategy Committee and
Minutes of the New River Valley Planning District Commission

New River Valley Comprehensive Economic Development Strategy Committee Meeting Minutes for December 19, 2013

9:00 AM – New River Valley Business Center, Fairlawn

I. Presentation: New River Valley Livability Initiative Update

Mr. Byrd and Mr. Mecham presented findings from the New River Valley Livability Initiative and the WIB Skills-Gap Analysis. The NRV Livability Initiative was developed over a three year period by the NRVPCD with the aid of local governments and non-profit organizations. Economic development was a key issue and priorities were identified through surveys and public meetings that also informed the CEDS.

The Skills-Gap Analysis, being performed by Virginia Tech's Office of Economic Development in cooperation with the NRMRWIB, is nearly complete and initial results are showing soft and hard skills where training opportunities are needed.

CEDS Committee Present:

Michael Miller, Virginia Tech Intellectual Properties; John White, Town of Pulaski; Jim Loux, Alleghany Brokerage Company; Gary Reedy, Citizens Telephone Cooperative; Tommy Loflin, New River Bank; Jim Flowers, VT KnowledgeWorks; Mack Hudson, Retired Dentist; Patrick O'Brien, Virginia Tech Office of Economic Development; Anthony Byrd, Radford University Small Business Development Center; Kevin Byrd and Brad Mecham, NRVPCD.

II. Presentation: Small Business and Entrepreneurial Resources

Mr. Mecham shared a short presentation on small business and entrepreneurial development resources within the region. As part of this presentation, Mr. Mecham presented information on the Small Business Development Center at Radford University, the New River Valley Business Center, a business incubator, and asked the CEDS Committee to consider all of the local, regional, and state resources available to small businesses and entrepreneurs.

III. Discussion: Additional Resources for Small Businesses and Entrepreneurs

The CEDS Committee was led by Mr. Mecham in discussing local, regional, and state resources. Discussion led to the identification of government, private, and non-profit resources at the local and regional level. It was suggested that this information be readily accessible on the NRVPCD website and distributed to other stakeholders.

IV. Adjournment

The CEDS Committee Meeting was adjourned at 10:25 AM.

New River Valley Comprehensive Economic Development Strategy Committee Meeting Minutes for April 10, 2014

10:00 AM – New River Valley Business Center, Fairlawn

I. Workforce Investment Board Skills Gap Analysis Summary

Marty Holliday with the New River/Mount Rogers Workforce Investment Board presented the findings from the Skills-Gap Analysis alongside Patrick O'Brien with Virginia Tech's Office of Economic Development. As part of the process, companies were interviewed and surveyed to determine gaps in soft skills such as customer service, and technical skills such as equipment maintenance. Part of the evaluation involved evaluating sector strengths and weaknesses.

CEDS Committee Present:

Michael Miller, Virginia Tech Intellectual Properties; John White, Town of Pulaski; Jim Loux, Alleghany Brokerage Company; Gary Reedy, Citizens Telephone Cooperative; Tommy Loflin, New River Bank; Marty Holliday, New River/Mount Rogers WIB; Mack Hudson, Retired Dentist; Patrick O'Brien, Virginia Tech Office of Economic Development; Jonathan Whitt, Roanoke-Blacksburg Innovation Network; Kamala Bauer, Wall Residences; Kevin Byrd and Brad Mecham, NRVPC.

II. Review of Project Ranking Criteria

Each year, the CEDS Committee reviews the Project Ranking Criteria within the CEDS in order to remain current on any new developments or for adjustment for new circumstances. Mr. Mecham, Regional Planner with the NRVPC, presented the current criteria and highlighted areas where improvements and updates could be made.

III. Breakout Groups: Prioritization from Other Regions in the U.S.

The CEDS Committee broke out into two groups to discuss criteria from the City of Cleveland/Cuyahoga County CEDS and the West Michigan Regional Planning Commission. The Committee was asked to compare the criteria from another region to the NRV criteria and prepare suggestions to improve the NRVPC CEDS Project Ranking Criteria.

IV. Report Out

Upon completion of the exercise, each group shared their suggestions with the group for discussion. As part of this process, rankings for additional criteria were established while editing some of the existing criteria to reward projects with greater regional impact.

V. Adjournment

The CEDS Committee Meeting was adjourned at 11:40 AM.

NEW RIVER VALLEY PLANNING DISTRICT COMMISSION
Minutes of the Commission Meeting
held on
April 24, 2014
6:00 p.m. – New River Valley Business Center, Fairlawn

I. CALL TO ORDER

PRESENT: Mr. M. Patton, Chair, Town of Floyd; Mr. S. Weaver, Treasurer, Town of Christiansburg; Mr. C. Bopp, Pulaski County; Mr. J. Carpenter, Radford University; Mr. L. Clevinger, Town of Pulaski; Mr. T. Cox, City of Radford; Mr. R. Chambers, Montgomery County; Mr. G. East, Town of Pulaski; Mr. T. Garrett, Town of Narrows; Mr. F. Gerald, Floyd County; Dr. H. Harvey, City of Radford; Ms. E. Janney, Floyd County; Ms. S. Journell, Town of Pearisburg; Mr. W. Kantsios, Town of Rich Creek; Mr. L. Law, Giles County; Ms. H. Lesko, Town of Blacksburg; Mr. K. Marshall, City of Radford; Mr. H. Showalter, Town of Christiansburg and Dr. D. Warren, Pulaski County.

ABSENT: Mr. K. Sullivan, Vice-Chair, Virginia Tech; Ms. A. Perkins, Montgomery County; Ms. C. Newcomb, Town of Blacksburg; Mr. R. McCoy, Giles County and Mr. J. Soileau, Virginia Tech.

Staff Attendees: Kevin Byrd, Brad Mecham, Janet McNew and Julie Phillips.

II. CONSENT AGENDA

A. Approval of Minutes for March

Mr. Patton called for approval of the consent agenda item if there were no questions or changes.

Motion: Mr. Cox moved for the approval of the minutes. Mr. Bopp seconded the motion.

Action: Motion carried, three abstentions; Mr. Garrett, Ms. Janney, and Ms. Lesko.

B. Approval of Treasurer's Report for March

Mr. Patton called for approval of the consent agenda item if there were no questions or changes.

Mr. Weaver questioned the overage on printing costs. Mr. Byrd explained this was due to the printing of the Livability reports which will be reimbursed by grant funds in part and Commission funds.

Motion: Ms. Janney moved for the approval of the treasurer's report. Ms. Lesko seconded the motion.

Action: Motion carried unanimously.

III. COMMONWEALTH INTERGOVERNMENTAL REVIEW PROCESS

A. Projects (Signed-off by the staff)

1. EDA Planning Assistance FY15

B. Regular Project Review

None.

C. Environmental Project Review

1. Reissuance of VPDES Permit No. VA0080837 - VA140414-016004000713
Rich Creek - Glen Creek Waste Water Treatment Plant

Motion: Ms. Lesko moved for the approval. Mr. Cox seconded the motion.

Action: Motion carried unanimously.

2. 2014 Claytor Lake drawdown plan

Motion: Dr. Harvey moved for the approval. Mr. Cox seconded the motion.

Action: Motion carried unanimously.

IV. PUBLIC ADDRESS

None.

V. REVIEW OF MUTUAL CONCERNS AND COMMISSIONERS' REPORTS

Mr. Patton welcomed Ms. Journell, the Town of Pearisburg representative to the Commission. Ms. Journell overviewed some of the items the Town of Pearisburg council is currently working on. Mr. Garrett shared an article from the USA Today regarding rails to trails and who ultimately owns the property. In some cases the railroad company did not own the land so they were not in a position to give easements or ownership to another entity. The issue has relevancy in the region since the Commission recently discussed the New River Trail State Park. Mr. Law shared the Pembroke Ruritan club will be holding a 75th anniversary celebration on August 11th. Ms. Lesko announced the Moss Center for the Arts will hold their grand opening this weekend (4/26-4/27). Mr. East shared the Pulaski Farmers Market will open on May 6th at the Pulaski Train Station. Mr. Carpenter announced Radford University will hold its graduation May 9th and 10th; Friday May 9th the University will have approximately 270 graduates in the Masters and Doctorates programs and Saturday May 10th there will be over 2,000 undergraduates. Mr. Carpenter also noted the speaker for the graduation ceremony will be the Secretary of Education, Anne Holton. Lastly, Mr. Clevinger announced the reenactment of the Battle at Cloyd's Mountain was a success and passed around a commemorative coin designed for the event.

VI. EXECUTIVE COMMITTEE REPORT

Mr. Patton reported on behalf of the Executive Committee. During their meeting the committee discussed the FY15 budget and the ongoing developments with the management of Virginia's First and the Commerce Park.

VII. CHAIR'S REPORT

Mr. Patton shared several articles from the Roanoke Times, including articles about the annual dinner, tourism, and Ms. Lesko's son.

VIII. EXECUTIVE DIRECTOR'S REPORT

This portion of the agenda was moved to the new business portion of the meeting.

IX. OLD BUSINESS

None.

X. NEW BUSINESS

A. Review Comprehensive Economic Development Strategy (CEDS) Goals, Objectives, Strategies and Ranking Criteria.

Mr. Mecham gave an overview of the Comprehensive Economic Development Strategy (CEDS) update and explained this year will be a five year update which will include a major overhaul and incorporate Livability Initiative data received through the public outreach. He gave examples of some of the projects in the region identified in the CEDS document and ultimately received funding such as the Floyd Innovation Center, the Virginia Tech Corporate Research Center, Commerce Park, TEMCI, and the Broadband network. He reviewed the goals, objectives and strategies document and explained the changes and major highlights for this year's review. At this time Mr. Mecham asked if there were comments or questions relating to the goals, objectives and strategies.

Discussion: Mr. Garrett asked for clarification on the last mile fiber optics project. Mr. Mecham explained the middle mile fiber project acts as an interstate and the last mile would act as the arterial roads and bring the fiber to homes. Mr. Marshall explained there are currently five or six wireless carriers in the New River Valley and questioned the need to increase the wireless network. Mr. Byrd explained the middle mile fiber is currently being used by some of the providers in the area to increase their own network and achieve greater signal strength at towers and increase bandwidth to customers. Mr. Marshall stated that many carriers in the New River Valley already had fiber and asked what else needs to be built. Mr. Byrd replied that nothing is currently being built, right now the question being explored is how to get the highest bandwidth to the homes and are the places that need increased bandwidth. Mr. Law noted there are new towers being installed in Giles County and explained that after they are installed there needs to be someone to service the areas. Mr. Marshall stated that in some areas the middle mile project installed new fiber over existing fiber provided by private sector companies. Mr. Patton questioned if the middle mile project added value. Mr. Marshall explained the project added fiber but limited private sector company's ability to charge for placing their own fiber. Mr. Byrd explained the fiber placed by the middle mile project was rural funded to increase access to bandwidth in areas that would not have had it otherwise. He also stated there may be areas where there is duplication of fiber; however there was no way to know that because in some circumstances private companies withheld the locations of their fiber. Without having the locations of fiber from the private companies it was considered absent in some areas. Government facilities were connected to increase bandwidth in schools and buildings such as the New River Valley Business Center and decrease the cost to the tax payer supporting those operations. Mr. Law explained that Pemtel hooked into the fiber from the middle mile fiber project and this enabled them to increase capacity and decrease cost to the customer. Mr. Byrd explained that at this point only research is being done to see what services are desired to get broadband to the home. Mr. Marshall stated more research needed to be done before fiber is installed to be sure there

is a need and that it is not a duplicate fiber. Mr. East noted Pulaski is benefiting from the project and asked who manages the project. Mr. Byrd explained Citizens Cooperative out of Floyd manages the fiber and explained that because it was funded by federal money they have pricing structure they have to use and the fiber is open access, so any company can utilize it to serve their customers. Also, because the local governments provided match money the local government facilities receive a decreased rate in addition to the e-rate which is an education discount rate. He also noted there are private providers who competed and still have contracts with local governments in place. Mr. Byrd explained when a request for the locations of the fiber is put out and the private providers do not respond it is perceived that there is a gap in service. Dr. Harvey asked if it is possible to track the locations with the GIS system. Mr. Byrd replied that it could; however, data would have to come from the private sector. Mr. Law explained that Pemtel chose not to share their information. Mr. Garrett noted that the last mile fiber has to be commercially viable. Mr. Marshall explained that the industry is moving toward total wireless solutions.

Dr. Harvey asked for the definition of affordable housing. Mr. Mecham explained it is 80% of the area median income. Dr. Harvey noted that the City of Radford has a high rate of section eight housing units and noted that there needs to be a plan for the locality to sustain the services. Mr. Byrd explained that the housing report provided by the Livability Initiative provides different concepts of affordable housing as a resource to communities.

Mr. Law explained that high schools should be included in the strategy of expanded education, training, and research around clean energy; he noted that many people in Giles County and the New River Valley do not have a college degree and stated that high schools or middle schools should be included.

Mr. Mecham reviewed the project ranking criteria and explained that there was one priority and two ranking criteria added to this year's review. He also explained that there have been scoring changes based on the projects of regional significance. Mr. Patton explained that there will be sufficient time on next month's agenda to talk about the ranking.

At this time item VIII. Directors Report was given:

Mr. Byrd provided a summary report in the Commission agenda packet. He reported the Executive Committee talked at length about the management of Virginias First and the Commerce Park. He explained there were two responses and the Executive Committees of Virginia's First and the Commerce Park will be meeting to discuss the proposals. The Commission proposed to continue the services it currently provides; a decision should be made by May. He explained the passenger rail committee was presented a framework for a study; it will now go to the MPO to see if the study will be funded for next fiscal year. He reported the PDC is working with the Health District on a partnership for mapping services. The Commission is currently working on a grant application to the Center for Disease Control for funds to develop Health Impact Assessments. He also noted the agenda has been reformatted to include the mission of the Commission at the bottom. He reported there will be a meeting May 7th to discuss regional tourism, the meeting will be held in the City of Radford Council chambers since space was not available at the NRV Business Center and he thanked the City for their willingness to host. He also reported the spring Mayors and Chairs

meeting will be May 28th at the NRV Business Center. Mr. Patton pointed out the tourism and Mayors and Chairs meetings were recommendations of the assessment that are currently being implemented.

Mr. Byrd distributed a resolution requesting VDOT to restore funding to the Route 460 Southgate Drive Interchange project. He explained that currently the interchange is at-grade and the project is to do a grade-separated interchange. Mr. Byrd noted that Virginia Tech has been working toward this project for several years, has completed the environmental work, and the project was funded. This year the funds were moved to a project on US 220. Mr. Patton questioned how this was discovered. Mr. Byrd replied the draft plan was released and when that happens the MPO and PDC review the projects on the list. Mr. Cox explained there were several projects that were ranked higher than the 460 interchange that have not been funded. Mr. Byrd explained there is different funding for urban and rural projects. Mr. Garrett questioned if the project was moved back a year or taken completely off the list. Mr. Byrd replied the priority list can change annually by the way the Commonwealth Transportation Board decides to allocate funding. However, once a project is started, it normally does not lose funding. Getting it started is the most crucial time. Ms. Lesko stated that the funding for this project cannot go toward any rural project in the region meaning the funds can go toward this project or one not in our region. Mr. Garrett noted that we should ask about the logic utilized for moving funding from this project to the US 220 project.

Motion: Mr. Law moved for the approval of the resolution. Mr. Clevinger seconded the motion.

Action: Mr. Patton requested a roll call vote on the motion:

Mr. Bopp - yes

Mr. Carpenter - yes

Mr. Chambers - yes

Mr. Clevinger - yes

Mr. Cox - yes

Mr. Garrett - yes

Mr. Gerald - no

Dr. Harvey - yes

Ms. Janney - abstain

Ms. Journell - yes

Mr. Law - yes

Ms. Lesko - yes

Mr. Marshall - yes

Mr. Patton - yes

Ms. Showalter - yes

Dr. Warren - no

Mr. Weaver - yes

Motion carried.

Mr. East asked how rural areas can gain clout and obtain funds. Mr. Byrd responded getting a local government resolution and getting community and private sector support, and using data to support the projects will help establish the need for the project. Ms. Lesko asked if a rural project that has

an impact on urban areas could use urban funds. Mr. Byrd replied that he has not seen it demonstrated, but also has not heard that question. Mr. Patton stated that he wants to have the VDOT representative, William Fralin, attend a meeting in the near future.

B. Review Southwest Virginia Economic Analysis Report

Mr. Byrd gave an overview of the SWVA Economic Analysis Report and explained the report is about building quality communities. The report illustrates the increase in tourism, industry changes, “anywhere” businesses, and employment changes in the NRV. The report compares the New River Trail State park to other state parks and shows its attendance is far greater than any other park; which is another reason there needs to be more signage to help the visitors recognize there are businesses that support trail users. Mr. Byrd explained a letter was submitted to Virginia Logos formally after last month’s meeting requesting guidance on how to proceed with the signage issue. Mr. Showalter asked how many signs are in question. Mr. Byrd explained there are seven exits along I-81 and I-77 where signage would be needed. Mr. Clevinger explained localities cannot put up signs on the interstate; signs have to be installed by the State since it is the state’s property. Mr. East noted the Pulaski County Chamber sign blew over and visits to the Visitor’s Center were down 20% without the sign, which shows the impact of the signage on the interstate.

XI. REGIONAL FOCUS

None.

Mr. Patton called for any further questions. Mr. Law asked for clarification on the Stormwater regulations changes. Mr. Byrd explained legislation passed so local governments do not have to administer the stormwater programs; they can defer to the VA Department of Environmental Quality to operate the program. For the New River Valley region Giles, Floyd, and Pulaski Counties will not have to administer their programs.

Mr. Patton called for a motion to adjourn the meeting.

Motion: Mr. Cox motioned to adjourn. Ms. Janney seconded the motion.

The meeting was adjourned at 7:40 pm.

Michael S. Patton, Chair
New River Valley Planning District Commission

NEW RIVER VALLEY PLANNING DISTRICT COMMISSION
Minutes of the Commission Meeting
held on
May 22, 2014
6:00 p.m. – New River Valley Business Center, Fairlawn

II. CALL TO ORDER

PRESENT: Mr. M. Patton, Chair, Town of Floyd; Mr. S. Weaver, Treasurer, Town of Christiansburg; Mr. C. Bopp, Pulaski County; Mr. K. Sullivan, Vice-Chair, Virginia Tech; Mr. T. Cox, City of Radford; Mr. R. Chambers, Montgomery County; Mr. F. Gerald, Floyd County; Dr. H. Harvey, City of Radford; Ms. E. Janney, Floyd County; Mr. W. Kantsios, Town of Rich Creek; Mr. L. Law, Giles County; Mr. K. Marshall, City of Radford; Ms. C. Newcomb, Town of Blacksburg; Mr. J. Soileau, Virginia Tech; and Dr. D. Warren, Pulaski County.

ABSENT: Mr. J. Carpenter, Radford University; Mr. L. Clevinger, Town of Pulaski; Mr. G. East, Town of Pulaski; Mr. T. Garrett, Town of Narrows; Ms. S. Journell, Town of Pearisburg; Ms. H. Lesko, Town of Blacksburg; Ms. A. Perkins, Montgomery County; Mr. R. McCoy, Giles County and Mr. H. Showalter, Town of Christiansburg.

Staff Attendees: Kevin Byrd, Brad Mecham, Janet McNew, Eli Sharp, Jennifer Wilsie and Julie Phillips.

II. CONSENT AGENDA

D. Approval of Minutes for April

Mr. Patton called for approval of the consent agenda item if there were no questions or changes.

Motion: Mr. Bopp moved for the approval of the minutes. Ms. Newcomb seconded the motion.

Action: Motion carried unanimously.

E. Approval of Treasurer's Report for April

Mr. Patton called for approval of the consent agenda item if there were no questions or changes.

Motion: Ms. Newcomb moved for the approval of the treasurer's report. Mr. Chambers seconded the motion.

Action: Motion carried unanimously.

III. COMMONWEALTH INTERGOVERNMENTAL REVIEW PROCESS

A. Projects (Signed-off by the staff)

1. EDA Planning Assistance FY15

B. Regular Project Review

None.

F. Environmental Project Review

3. Reissuance of VPDES Permit No. VA0060844 Lower Stroubles Creek WWTP
Motion: Ms. Newcomb moved for the approval. Mr. Bopp seconded the motion.
Action: Motion carried unanimously.
4. Reissuance of VPDES Permit No. VA0087084 APCo's Claytor Hydroelectric Plant
Motion: Dr. Harvey moved for the approval. Mr. Chambers seconded the motion.
Action: Motion carried unanimously.
5. Virginia Department of Agriculture and Consumer Services Pesticide Performance Grant Application FY15-17
Motion: Mr. Chambers moved for the approval. Ms. Newcomb seconded the motion.
Action: Motion carried unanimously.

IV. PUBLIC ADDRESS

None.

V. REVIEW OF MUTUAL CONCERNS AND COMMISSIONERS' REPORTS

Mr. Law reported the Caterpillar plant in the Town of Pearisburg will be closing. Mr. Law also noted that Pemtel recently paid \$550,000 to its members in the form of capital credit bringing the total paid to \$10 million. Ms. Newcomb reported the Town of Blacksburg will be voting on their stormwater utility in June. Mr. Soileau explained the students are gone for the summer and there are a number of construction projects underway at Virginia Tech. Mr. Patton noted Mr. Marshall was re-elected to the City of Radford Council. Dr. Warren reported Pulaski County Public Service Authority is currently testing wells in Draper as an alternate water source. Dr. Warren also explained that Pulaski County received a gold award for their water treatment plant. Mr. Gerald explained the Floyd Innovation Center is well on its way toward completion and expressed concern over the transition of the old water treatment plant to a distillery. Mr. Patton noted that Floyd County is losing the Dex plant. Mr. Bopp reported the Future Farmers of America held a banquet and explained how impressed he was by the young members of that group.

VI. EXECUTIVE COMMITTEE REPORT

Mr. Sullivan reported on behalf of the Executive Committee. During their meeting the committee discussed the FY15 budget, the NRV tourism meeting, the FY14-15 slate of officers, the peer-to-peer visit, and forming a work program committee.

VII. CHAIR'S REPORT

Mr. Patton shared Ms. Janney was in many pictures in the Floyd Press. He also explained that he attended an event recently that gave him many ideas for next year's annual dinner. Mr. Patton reported that he was honored to attend New River Community College's (NRCC) graduation and also noted that Ms. Newcomb graduated. Dr. Warren noted that the grandson of the first chancellor of NRCC graduated this year and remarked it was an honor to have the chancellor in attendance at the graduation.

VIII. EXECUTIVE DIRECTOR'S REPORT

Mr. Byrd noted the framework of an agenda for the peer-to-peer visit was passed around at the meeting; he explained the committee created this framework and asked the Commissioners if there was anything they would like added or removed from the agenda. Mr. Patton noted he would like to visit some of the smaller more rural communities. Mr. Byrd also explained the visit is anticipated for late summer or early fall. Mr. Patton noted that he would like to see as many Commissioners as possible attend.

Mr. Byrd provided a summary report in the Commission agenda packet. He reported the Executive Committees of Virginia's First and the Commerce Park elected to have the Economic Development Alliance fulfill the management services. A primary reason the Alliance was chosen was because they were willing fulfill the entire suite of duties. He also noted the VDOT Six-Year Improvement Plan public meeting was held May 19th at Northside High School, he explained the Secretary of Transportation announced funding is planned to be restored for the Southgate Interchange project and that the relocation of the park and ride in Christiansburg is anticipated for funding. He reported the NRV tourism meeting held on May 7th had great representation with 15 people in attendance and a second meeting is planned for July 31st in the NRV Business Center. Mr. Byrd announced that the Southwest Virginia Summit will be held May 29th in Abingdon with the focus on collective impact approach to community and economic development. He announced the annual local government Planning Commissioner Training event will be held May 28th at the NRV Business Center and will focus on aging in our communities; there will be three panelists to discuss home modifications that facilitate aging, land use and zoning ordinance provisions in relation to aging in place and new construction features sought by senior home buyers. The Spring Mayors and Chairs meeting will also take place on May 28th at the NRV Business Center.

IX. OLD BUSINESS

None.

X. NEW BUSINESS

A. Comprehensive Economic Development Strategy (CEDS) Project Package

Mr. Mecham gave an overview of the Comprehensive Economic Development Strategy (CEDS) projects completed in 2013-2014, projects near completion, and provided a list of the 2014-2015 highest ranking/priority projects for the New River Valley. Some of the projects completed in 2013-2014 are the Raymond F. Ratcliffe Memorial Transportation Museum, the Hethwood portion of the Huckleberry Trail, Phase 2 of the Corporate Research Center. Projects currently near completion are the Route 114 Bridge, which is now open, the Renva Knowles Bridge over Rt. 114 on the Huckleberry Trail and the Pulaski County Sheriff's office and a joint dispatch center. Mr. Mecham then gave an overview of the top ten projects identified for 2014-2015 and asked if there were comments or questions relating to the projects identified.

Discussion:

Dr. Harvey asked why shell buildings were included in the top ten projects list and explained they have not worked out well within the City of Radford, she suggested virtual buildings instead. Mr. Mecham explained this was identified by the Economic Development Alliance in order for communities to have inventory to show prospects and to stay competitive with other areas that offer new buildings. It was noted that virtual building plans have been developed for the Commerce Park and a few other sites in the region. Dr. Harvey noted that a shell building sat empty for years in the City of Radford but was recently sold. Mr. Marshall added the building was sold well below its value. Mr. Sullivan questioned where a conference/civic center would be located and who identified it. Mr. Mecham explained this is a regional vision project and it was identified several years ago. Mr. Byrd explained this was included in the ranking list when the visioning for RU West took place, prior to the Inn at Virginia Tech being built. The vision was to create a cost-effective conference center for the region comparable to the Wytheville Conference center. Mr. Sullivan noted he would like to know how well the Wytheville Conference center is doing financially before spending too much time on a similar facility in the New River Valley. Mr. Patton asked Mr. Mecham to explain the next steps in the CEDS update. Mr. Mecham responded that the Commission will need to approve the full CEDS package in June. Dr. Harvey questioned if the project listed as Graded Building Site – NRV Commerce Park would also include maintenance of the site to keep it from being overgrown. Mr. Mecham explained maintenance has not been discussed, but will be in the future should the project happen.

B. Bicycle and Pedestrian Master Plan for the NRV MPO

Mr. Sharp gave an overview of the Bicycle and Pedestrian Master Plan and explained the purpose of the report and showed how local data was used to prepare the report, to develop long-range strategies, identify multimodal corridors, and to assist in local decision making. Mr. Sharp overviewed different maps within the plan and showed the Commissioners how the interactive maps located on the Commission's website can be used. Mr. Sharp noted that there will be a public meeting next Thursday May 29th at the Montgomery County Government Center from 4 p.m. until 7 p.m.

Discussion:

Ms. Newcomb asked if local planners are aware of these maps. Mr. Sharp explained he has presented to several groups including the Blacksburg Corridor Committee. Mr. Sullivan questioned if the PDC is charging for this plan. Mr. Sharp explained the MPO has paid \$30,000 split over two fiscal years.

C. Virginia Retirement System Contribution Rate Resolution

Mr. Byrd explained the Commission historically selects the certified rate option provided by VRS and noted that the 6.60% rate is a reduction from the current rate.

Discussion:

Mr. Cox questioned if the Commission is fully funded. Mr. Byrd responded the PDC has not seen communication from VRS to indicate if the Commission is not fully funded, but it is something staff will check on.

Action:

Motion: Mr. Cox moved for the approval of the resolution. Mr. Bopp seconded the motion.

Action: Motion carried unanimously.

G. Establishing Commission Work Program Committee

Mr. Byrd explained one of the recommendations from the SERDI assessment process was the establishment of a Work Program Committee. The purpose of this committee will be to review the upcoming projects scheduled for the Commission and help provide direction when requests for services are greater than staff time available. Mr. Patton explained he would like the Commissioners to volunteer for this committee and noted that Mr. Clevinger has been chosen to be the chair.

Action:

Motion: Mr. Soileau moved to establish the committee. Mr. Chambers seconded the motion.

Action: Motion carried unanimously.

H. Proposed FY15 Commission Budget

Mr. Byrd noted the proposed budget was included in the packet and explained a revised anticipated revenue spreadsheet was distributed. He also noted Commission staff prepares a budget each year for the Commission to review and adopt for the upcoming fiscal year. He then called for any questions related to the proposed budget.

Action:

Motion: Mr. Weaver moved to approve the budget. Mr. Chambers seconded the motion.

Action: Motion carried unanimously.

I. Commission Officers for FY15 -Slate

Mr. Patton reported the Nominating Committee, as prescribed in the Commission bylaws, made up of the chair, himself; the treasurer, Mr. Weaver; and one appointed member, Mr. Bopp, have proposed the slate of officers for FY15 to be:

Chair: Mr. Sullivan

Vice-Chair: Mr. East

Treasurer: Mr. Weaver

At-Large Member: Mr. Carpenter

Mr. Patton then explained the Commission will vote on the slate at next month's meeting.

Mr. Patton called for the Commission to approve the slate of officers brought to the Commission by the Nominating Committee.

Action: Motion carried unanimously.

The meeting was adjourned at 7:25 pm.

Michael S. Patton, Chair
New River Valley Planning District Commission

Appendix II
CEDS Committee Membership,
NRV Livability Initiative Economic Development Working Group,
and
PDC Membership

**New River Valley Comprehensive Economic
Development Strategy Committee**

Name	Representing	Public or Private
Buddy Kast	Town of Narrows	Public
Kamala Bauers	Floyd County	Private
Jim Flowers	Virginia Tech	Private
Michael Miller	Montgomery County	Private
Peggy White	Pulaski County	Private
Jim Loux	Pulaski County	Private
Brad Jones	Town of Pearisburg	Private
John White	Town of Pulaski	Public
John Hawley	Town of Pulaski	Public
Basil Edwards	City of Radford	Public
Henry Showalter	Town of Christiansburg	Private
Anthony Byrd	Radford University	Private
Sam Moore	Town of Floyd	Private
Aric Bopp	New River Valley Economic Development Alliance	Public
Marty Holliday	New River/Mount Rogers Workforce Investment Board	Public
Joe Fortier	City of Radford	Private
Thomas Loflin	Town of Christiansburg	Private
Rick Weaver	Montgomery County	Public
Randall Rose	Virginia Tourism Corporation	Public
David Denny	Town of Blacksburg	Private
Shaun Rai	Town of Christiansburg	Private
Gary Forget	Town of Dublin	Private
Becky Greer	City of Radford	Public
Mack Hilton	City of Radford	Private
Mark Nichols	Town of Pulaski	Private

FY 2013-2014
New River Valley Planning District Commission Members
Chair – Mr. Mike Patton
Vice-Chair – Mr. Kevin Sullivan
Treasurer – Mr. Scott Weaver
At-Large – Mr. Larry Clevinger
Past-Chair – Ms. Holly Lesko

<u>Floyd County:</u>	Mr. Fred Gerald* 994 Sutphin Rd., NW Willis, VA 24380	Ms. Evelyn Janney 366 Bethlehem Church Rd., NE Floyd, VA 24091	<u>Town of Floyd:</u> Mr. Mike Patton* 123 Wilson Street Floyd, VA 24091
<u>Giles County:</u>	Mr. Richard McCoy* 505 Tyler Avenue Pearisburg, VA 24134	Mr. Leon Law 1809 Cascades Drive Pembroke, VA 24136	<u>Town of Narrows:</u> Mr. Thomas Garrett* 105 Bridge Street Narrows, VA 24124
	<u>Town of Pearisburg:</u> Ms. Susie Journell* 412 N. Dennis St. Pearisburg, VA 24134	<u>Town of Rich Creek:</u> Mr. William Kantsios* 936 Greenbriar Drive Rich Creek, VA 24147	
<u>Montgomery County:</u>	Ms. Annette Perkins* 1407 Valley View Drive Blacksburg, VA 24060	Mr. Ray Chambers 1425 Smithfield Drive Blacksburg, VA 24060	
<u>Pulaski County:</u>	Mr. Doug Warren 4540 Shelburne Road Radford, VA 24141	Mr. Charles Bopp* PO Box 1402 Pulaski, VA 24301	
<u>City of Radford:</u>	Mr. Tim Cox* 905 Walker Drive Radford, VA 24141	Dr. Helen Harvey 701 Berkley St. Radford, VA 24141	Mr. Keith Marshall 500 Fourth Street Radford, VA 24141
<u>Town of Blacksburg:</u>	Ms. Cecile Newcomb* 151 College Ave #23 Blacksburg VA 24060	Ms. Holly Lesko 1708 Westover Drive Blacksburg, VA 24060	
<u>Town of Christiansburg:</u>	Mr. Scott Weaver 965 Cardinal Drive Christiansburg, VA 24073	Mr. Henry Showalter* 455 Overhill Road Christiansburg, VA 24073	
<u>Town of Pulaski</u>	Mr. Greg East* 517 North Madison Ave. Pulaski, VA 24301	Mr. Larry Clevinger 1128 Well Street Pulaski, VA 24301	
<u>Radford University:</u>	Mr. Joe Carpenter Martin Hall 0323 Radford, VA 24141		
<u>Virginia Tech:</u>	Mr. Jason Soileau VA Tech Blacksburg, VA 24061	Mr. Kevin Sullivan 2103 Chestnut Drive Blacksburg, VA 24060	* = Elected Official

Appendix III
Regional Business and Entrepreneurial Services

Regional Business Services

Radford Small Business Development Center

701 Tyler Avenue #231

Radford University

Radford, VA. 24142

Phone: 540-831-6056

Contact: Anthony Byrd, Director

-Services:

- Business planning assistance
- Loan packaging assistance
- Sources of business financing
- Marketing assistance
- Census, economic and business data
- Financial Analysis
- Small business training workshops
- Business Consulting

Website: www.radford.edu/content/cobe/sbdc-web.html

New River Valley Business Center

6580 Valley Center Drive

Radford, VA 24141

Phone: 540-633-6731

-Services: Small business start-up industrial and office space with shared meeting rooms, a copy room, at a flat rental rate (utilities included).

Website: www.nrvdc.org/nrvbc.html

New River Valley Development Corporation Revolving Loan Fund

6580 Valley Center Drive, Suite 302

Radford, VA 24141

Phone: 540-633-6730

-Services: Low interest micro-loans for small businesses located within the New River Valley.

Website: www.nrvdc.org/dcfinance.html

VT KnowledgeWorks

2200 Kraft Drive, Suite 1000

Blacksburg, VA 24060

540-443-9100

-Services: PLAN program components help market-worthy ventures organize, formulate strategy, and obtain outside investment. LAUNCH components help get the business up and running. GROW offerings emphasize strategic support for ongoing growth, continuing intra-preneurship, and professional development for the corporate leader.

Website: www.vtknowledgeworks.com/

Roanoke Blacksburg Technology Council

2200 Kraft Drive, Suite 1400

Blacksburg, VA 24060

Phone: 540-443-9232

-Services: Networking and peer learning for technology companies, and talent promotion.

Website: www.thetechnologycouncil.com/

460 Angels

-Services: Funding and coaching of early stage hi-tech entrepreneurs.

Website: www.460angels.com/index.html

Virginia Cooperative Extension

101 Hutcheson Hall (0402)

Virginia Tech

Blacksburg, VA 24061

Phone: 540-231-5299

-Services: Overall farm business technical assistance.

Website: www.ext.vt.edu/

Virginia Community Capital

930 Cambria Street, N.E.

Christiansburg, VA 24073

540-260-3126

-Services: CDFI offering small business lending and advisory services.

Website: www.vacommunitycapital.org/

Floyd County Business Services

Economic Development Authority of Floyd County

"5 and 10 Loan Program"

Qualifiers: Located in Floyd County, 9 or fewer employees, create/retain one job

-Services: Low interest loans at 5 and 10 year terms

Website: www.floydcova.org/business/floyd5and10.shtml

Montgomery County Business Services

Montgomery-Blacksburg-Christiansburg (MBC) Development Corporation Revolving Loan Fund

755 Roanoke Street, Suite 2H

Christiansburg, VA 24073-3184

Phone: (540) 382-5732

-Services: Micro Solutions small business lending and training program for entrepreneurs.

Website: www.yesmontgomeryva.org/content/115/161/171/441.aspx

TechPad

432 North Main Street, Suite 200 (above PK's Restaurant)

Blacksburg, Virginia, 24060

-Services: Technology focused coworking and hacker community.

Website: www.techpad.org/

Pulaski County Business Services

Beans and Rice

246 North Washington

Suite B

Pulaski, VA 24301

Phone: 540-980-4111

-Services

Website: www.beansandrice.org/

City of Radford Business Services

Beans and Rice

1608 West Main Street

Radford, Virginia 24141

Phone: 540-633-6270

-Services: Micro Solutions small business lending and training program for entrepreneurs.

Website: www.beansandrice.org/

State and Interregional

Virginia Department of Business Assistance

-Services: Loan guaranties, loan loss insurance, Business One Stop, small business workshops.

Website: vdba.virginia.gov/starting_business.shtml

Roanoke SCORE

105 Franklin Rd SW, Suite 150

Roanoke VA 24011

Phone: 540-857-2834

-Services: Entrepreneur education, workshops, and events.

Website: roanoke.score.org/